

PINOYSTITCH FREE PATTERN

Copyright owned by Artist. Not for resale or distribution.

Cross Stitch Pattern: Roses in a Glass Vase

Designed by: Alexander Koester

Colors: 35

Stitches: 112 x 128

*Approximate Finished Sizes:**

14 count aida = 8 w x 9 h Inches

16 count aida = 7 w x 8 h Inches

18 count aida = 6 w x 7 h Inches

21 count aida = 5 w x 6 h Inches

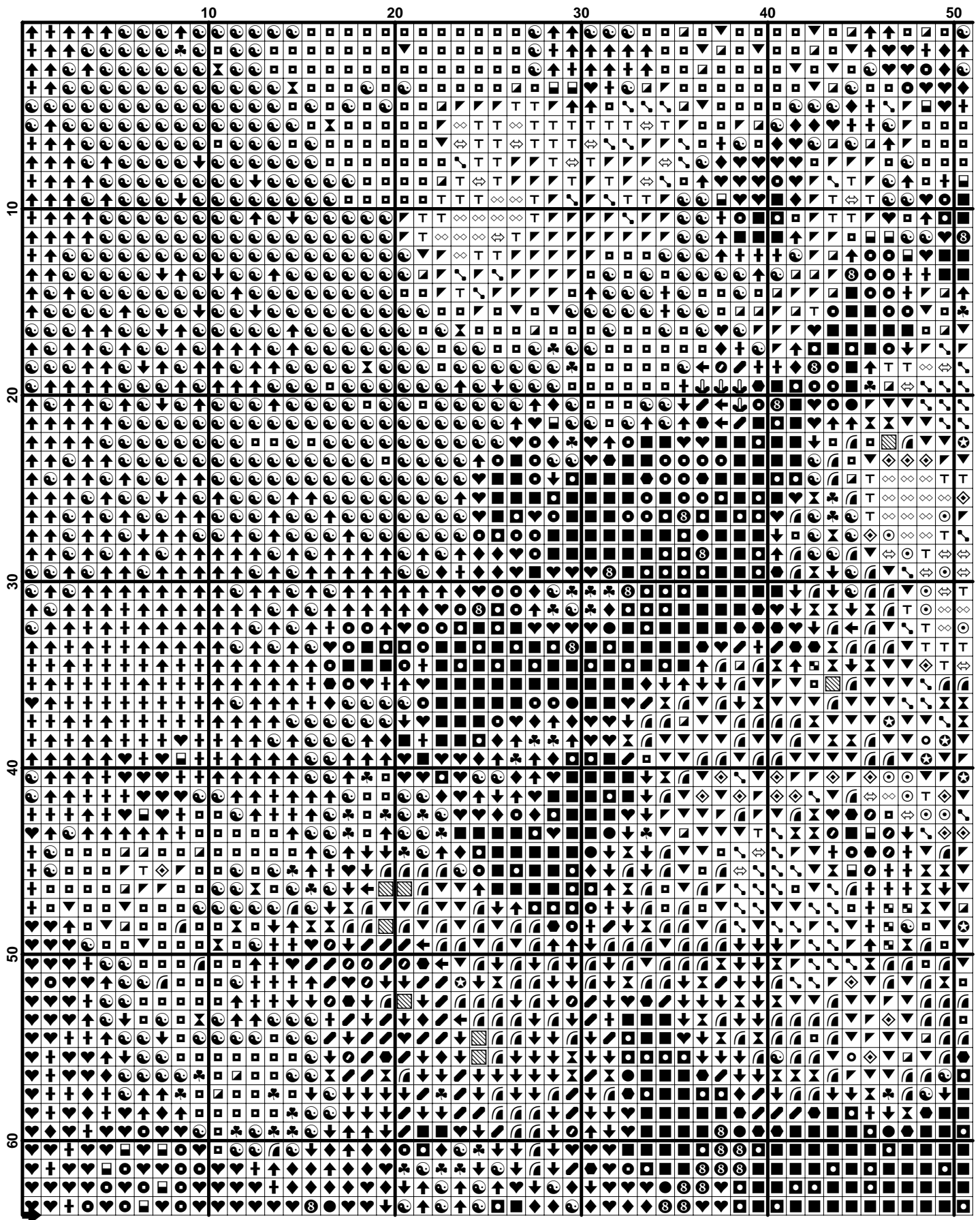
**Pattern sizes do not include margins. Ideally you should add 2" on all sides. Uses Full Cross Stitches Only.*

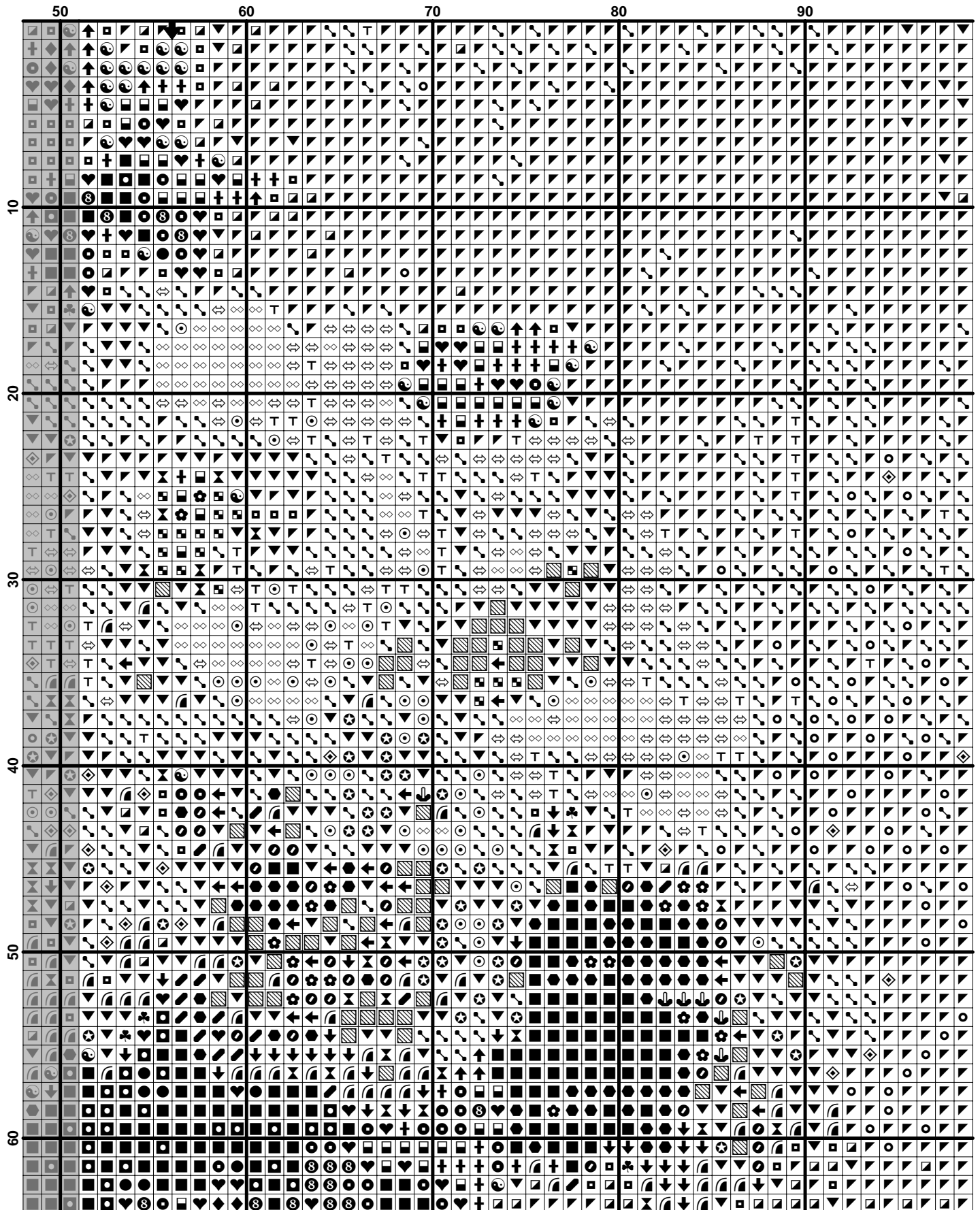


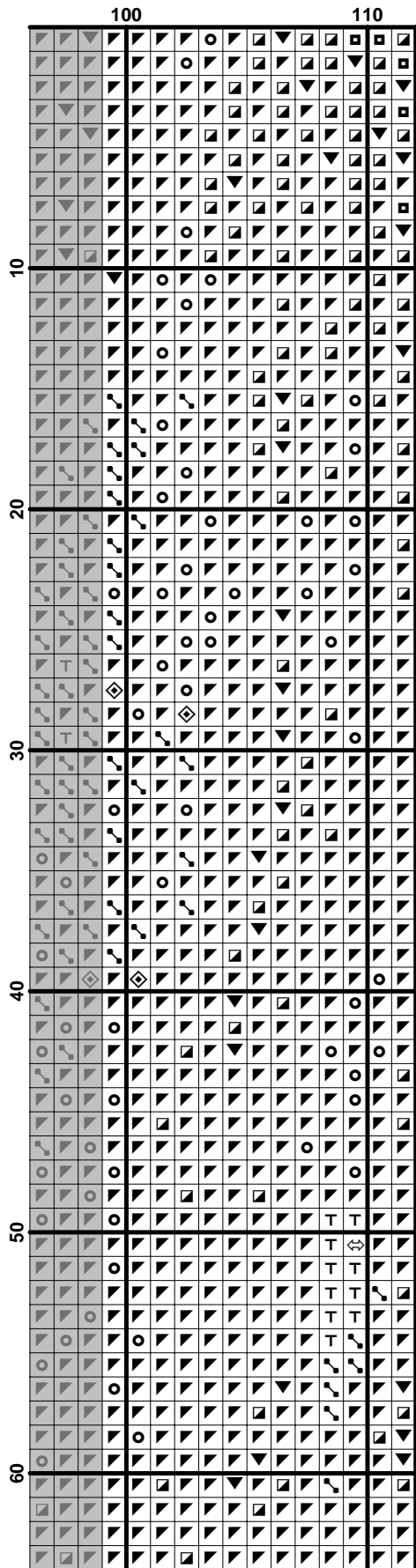
About the Art

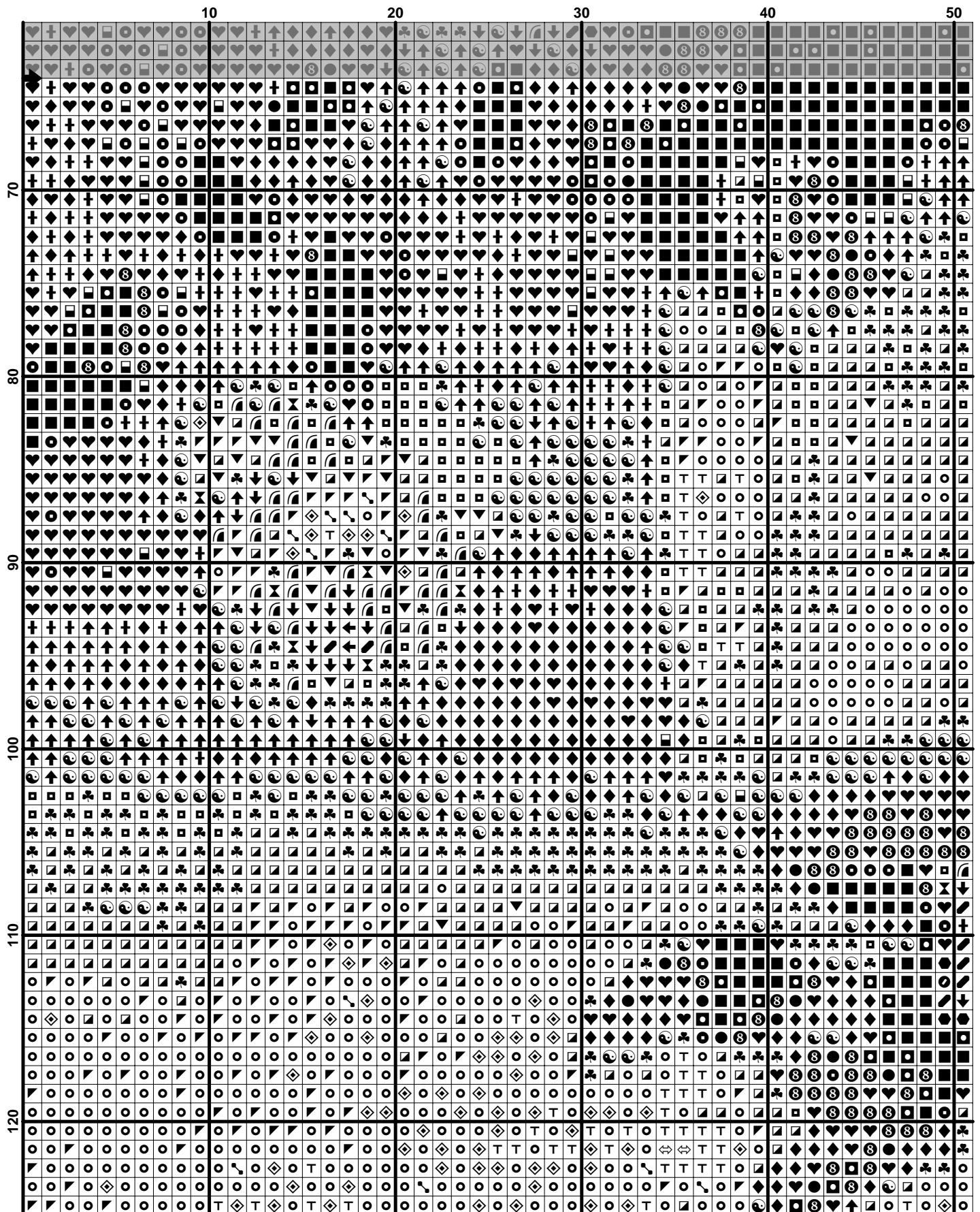
The rose has always been valued for its beauty and has a long history of symbolism. Roses are ancient symbols of love and beauty. 'Rose' means pink or red in a variety of languages (such as Romance languages, Greek, and Polish). The rose was sacred to a number of goddesses (including Isis and Aphrodite), and is often used as a symbol of the Virgin Mary. The ancient Greeks and Romans identified the rose with their goddesses of love referred to as Aphrodite and Venus. In Rome a wild rose would be placed on the door of a room where secret or confidential matters were discussed. The phrase *sub rosa*, or "under the rose", means to keep a secret — derived from this ancient Roman practice.

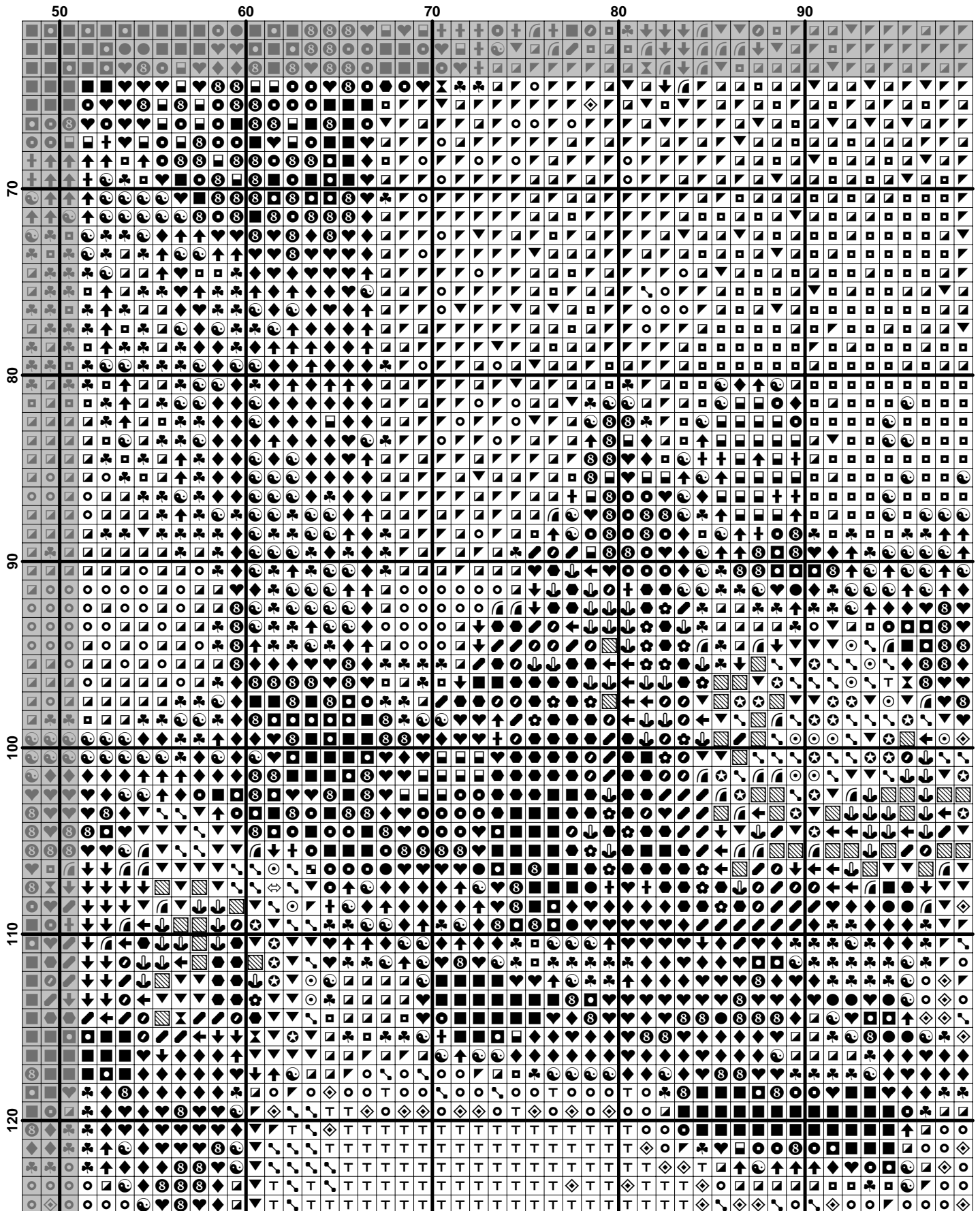
Source: www.wikipedia.com

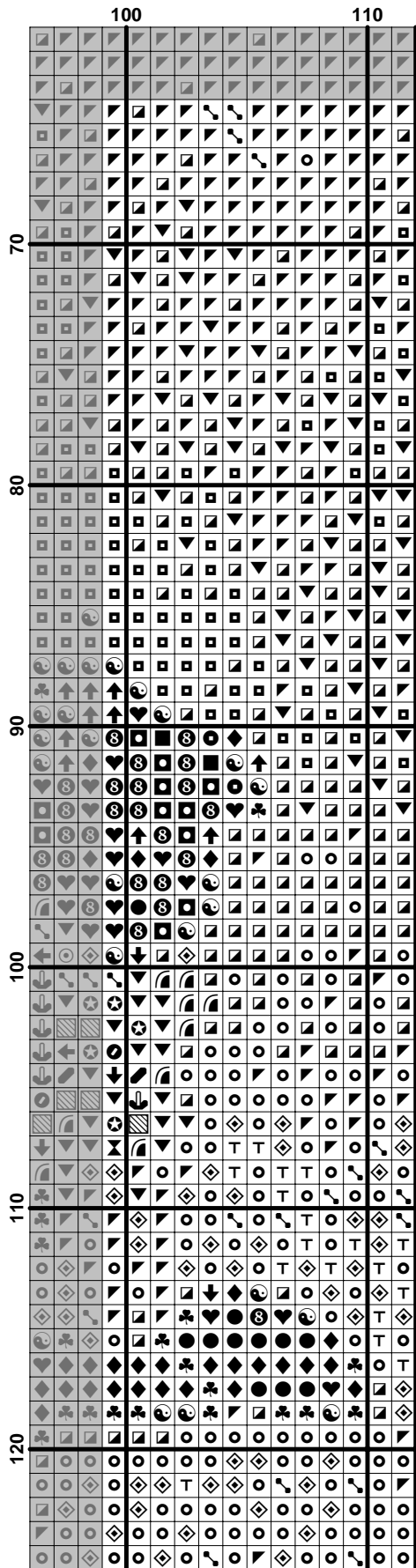


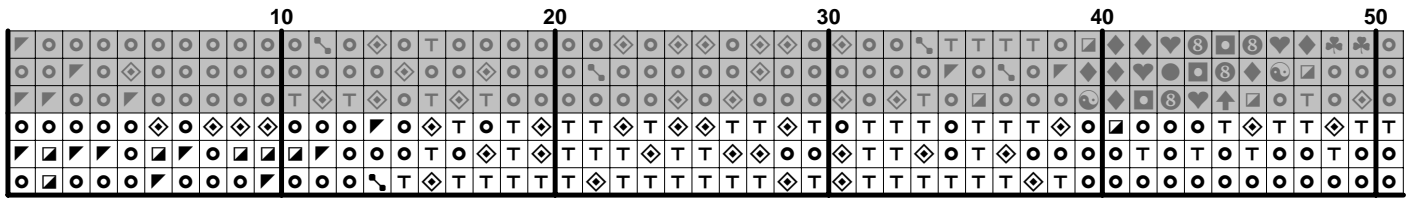


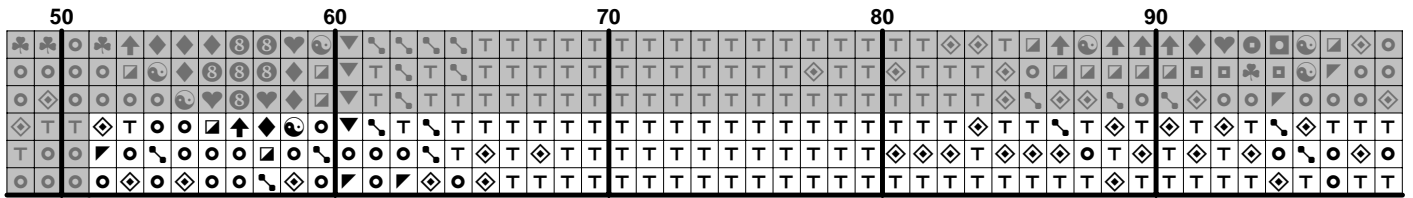


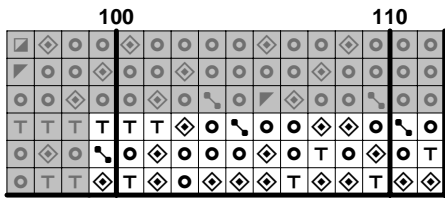












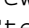
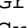
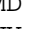












Pattern Name: Roses in a Glass Vase
Designed By: Alexander Koester
Company: <http://www.pinoystitch.org>
Copyright: Owned by Artist. Not for Distribution or Resale.
Fabric: Aida 14, White
 112w X 128h Stitches
Size(s): 14 Count, 8w X 9-1/8h in
 16 Count, 7w X 8h in
 18 Count, 6-1/8w X 7h in
 21 Count, 5-1/4w X 6h in

Floss Used for Full Stitches:

Symbol	Strands	Type	Number	Color
	2	DMC	154	Grape-VY DK
	2	DMC	169	Pewter-LT
	2	DMC	310	Black
	2	DMC	315	Antique Mauve-VY DK
	2	DMC	318	Steel Gray-LT
	2	DMC	413	Pewter Gray-DK
	2	DMC	414	Steel Gray-DK
	2	DMC	452	Shell Gray-MD
	2	DMC	500	Blue Green-VY DK
	2	DMC	535	Ash Gray-VY LT
	2	DMC	632	Desert Sand-UL VY DK
	2	DMC	645	Beaver Gray-VY DK
	2	DMC	646	Beaver Gray-DK
	2	DMC	647	Beaver Gray-MD
	2	DMC	648	Beaver Gray-LT
	2	DMC	778	Antique Mauve-VY LT
	2	DMC	815	Garnet-MD
	2	DMC	823	Navy Blue-DK
	2	DMC	842	Beige Brown-VY LT
	2	DMC	844	Beaver Brown-UL DK
	2	DMC	915	Plum-DK
	2	DMC	934	Black Avocado Green
	2	DMC	935	Avocado Green-DK
	2	DMC	939	Navy Blue-VY DK
	2	DMC	3033	Mocha Brown-VY LT
	2	DMC	3041	Antique Violet-MD
	2	DMC	3042	Antique Violet-LT
	2	DMC	3685	Mauve-DK
	2	DMC	3726	Antique Mauve-DK
	2	DMC	3740	Antique Violet-DK
	2	DMC	3799	Pewter Gray-VY DK
	2	DMC	3834	Grape-DK
	2	DMC	3836	Grape-LT
	2	DMC	3860	Cocoa
	2	DMC	3861	Cocoa-LT

Usage Summary**Strands Per Skein:** 6**Skein Length:** 313.0 in

Type	Number	Full	Half	Quarter	Petite	Back(in)	Str(in)	Spec(in)	French	Bead	Skein Est.
DMC 154	154	186	0	0	0	0.0	0.0	0.0	0	0	1.000
DMC 169	169	1089	0	0	0	0.0	0.0	0.0	0	0	1.000
DMC 310	310	749	0	0	0	0.0	0.0	0.0	0	0	1.000
DMC 315	315	62	0	0	0	0.0	0.0	0.0	0	0	1.000
DMC 318	318	858	0	0	0	0.0	0.0	0.0	0	0	1.000
DMC 413	413	587	0	0	0	0.0	0.0	0.0	0	0	1.000
DMC 414	414	475	0	0	0	0.0	0.0	0.0	0	0	1.000
DMC 452	452	679	0	0	0	0.0	0.0	0.0	0	0	1.000
DMC 500	500	258	0	0	0	0.0	0.0	0.0	0	0	1.000
DMC 535	535	683	0	0	0	0.0	0.0	0.0	0	0	1.000
DMC 632	632	25	0	0	0	0.0	0.0	0.0	0	0	1.000
DMC 645	645	1089	0	0	0	0.0	0.0	0.0	0	0	1.000
DMC 646	646	740	0	0	0	0.0	0.0	0.0	0	0	1.000
DMC 647	647	2250	0	0	0	0.0	0.0	0.0	0	0	1.000
DMC 648	648	438	0	0	0	0.0	0.0	0.0	0	0	1.000
DMC 778	778	74	0	0	0	0.0	0.0	0.0	0	0	1.000
DMC 815	815	39	0	0	0	0.0	0.0	0.0	0	0	1.000
DMC 823	823	61	0	0	0	0.0	0.0	0.0	0	0	1.000
DMC 842	842	180	0	0	0	0.0	0.0	0.0	0	0	1.000
DMC 844	844	306	0	0	0	0.0	0.0	0.0	0	0	1.000
DMC 915	915	63	0	0	0	0.0	0.0	0.0	0	0	1.000
DMC 934	934	252	0	0	0	0.0	0.0	0.0	0	0	1.000
DMC 935	935	155	0	0	0	0.0	0.0	0.0	0	0	1.000
DMC 939	939	218	0	0	0	0.0	0.0	0.0	0	0	1.000
DMC 3033	3033	127	0	0	0	0.0	0.0	0.0	0	0	1.000
DMC 3041	3041	301	0	0	0	0.0	0.0	0.0	0	0	1.000
DMC 3042	3042	249	0	0	0	0.0	0.0	0.0	0	0	1.000
DMC 3685	3685	81	0	0	0	0.0	0.0	0.0	0	0	1.000
DMC 3726	3726	124	0	0	0	0.0	0.0	0.0	0	0	1.000
DMC 3740	3740	251	0	0	0	0.0	0.0	0.0	0	0	1.000
DMC 3799	3799	731	0	0	0	0.0	0.0	0.0	0	0	1.000
DMC 3834	3834	119	0	0	0	0.0	0.0	0.0	0	0	1.000
DMC 3836	3836	72	0	0	0	0.0	0.0	0.0	0	0	1.000
DMC 3860	3860	106	0	0	0	0.0	0.0	0.0	0	0	1.000
DMC 3861	3861	659	0	0	0	0.0	0.0	0.0	0	0	1.000