

PINOY STITCH EXCLUSIVES

Cross Stitch Pattern: Yellow Submarine
Designed by: The Beatles
Colors: 35
Stitches: 180 x 157
Sizes:*

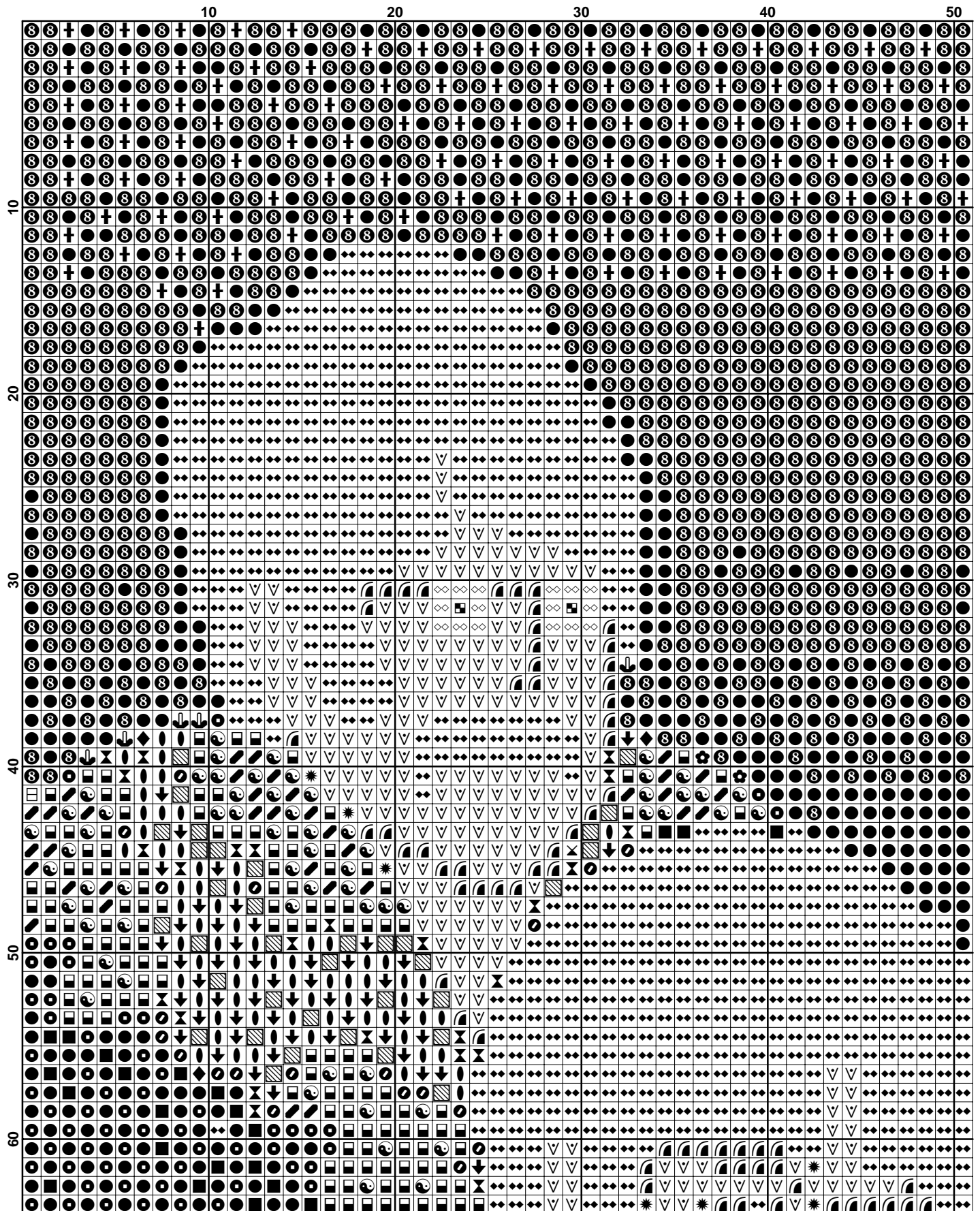
14 count	13 w	x	11 h	Inches
16 count	11 w	x	10 h	Inches
18 count	10 w	x	9 h	Inches
21 count	9 w	x	7 h	Inches

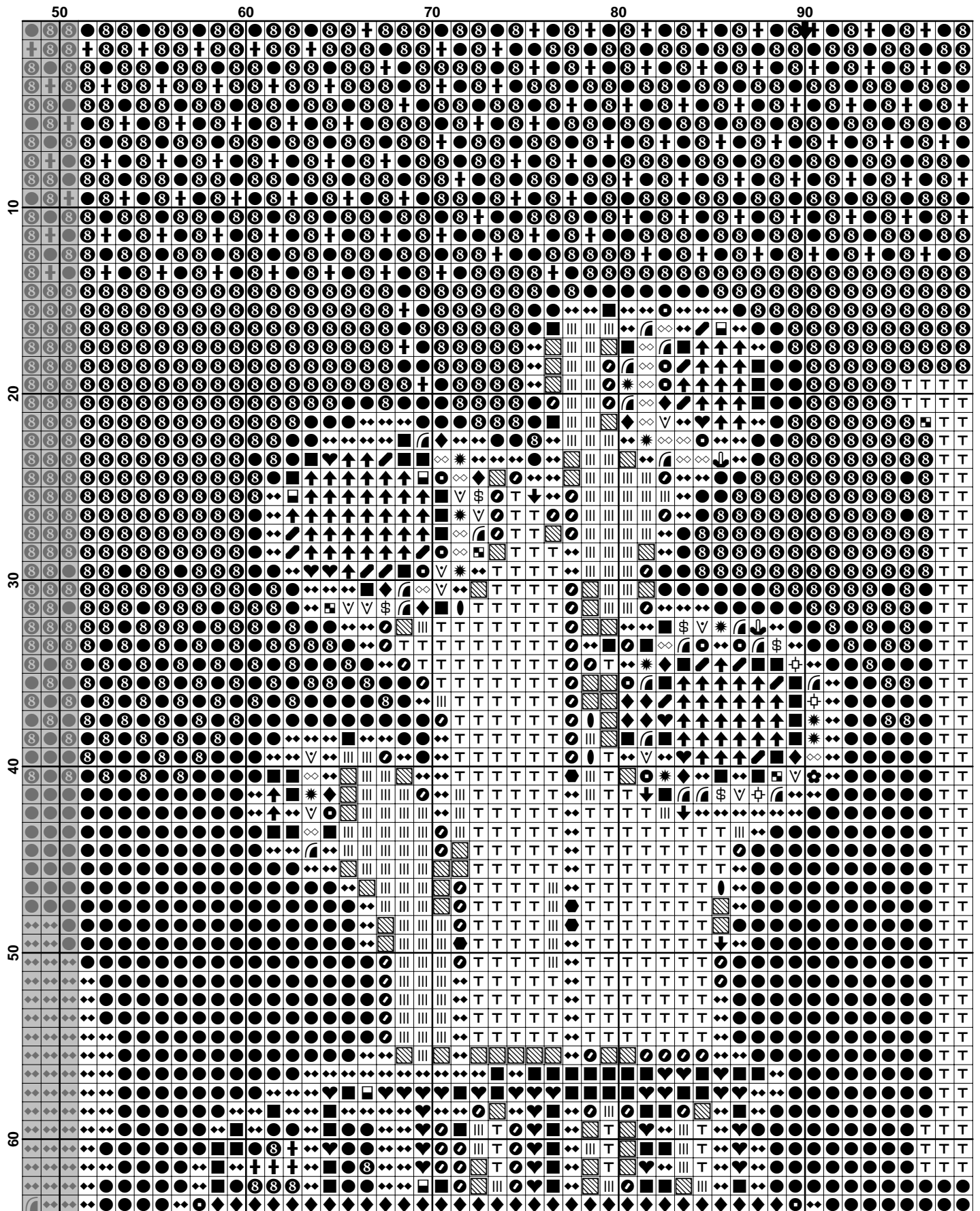
*Pattern sizes do not include margins. Ideally you should add 2" on all sides.

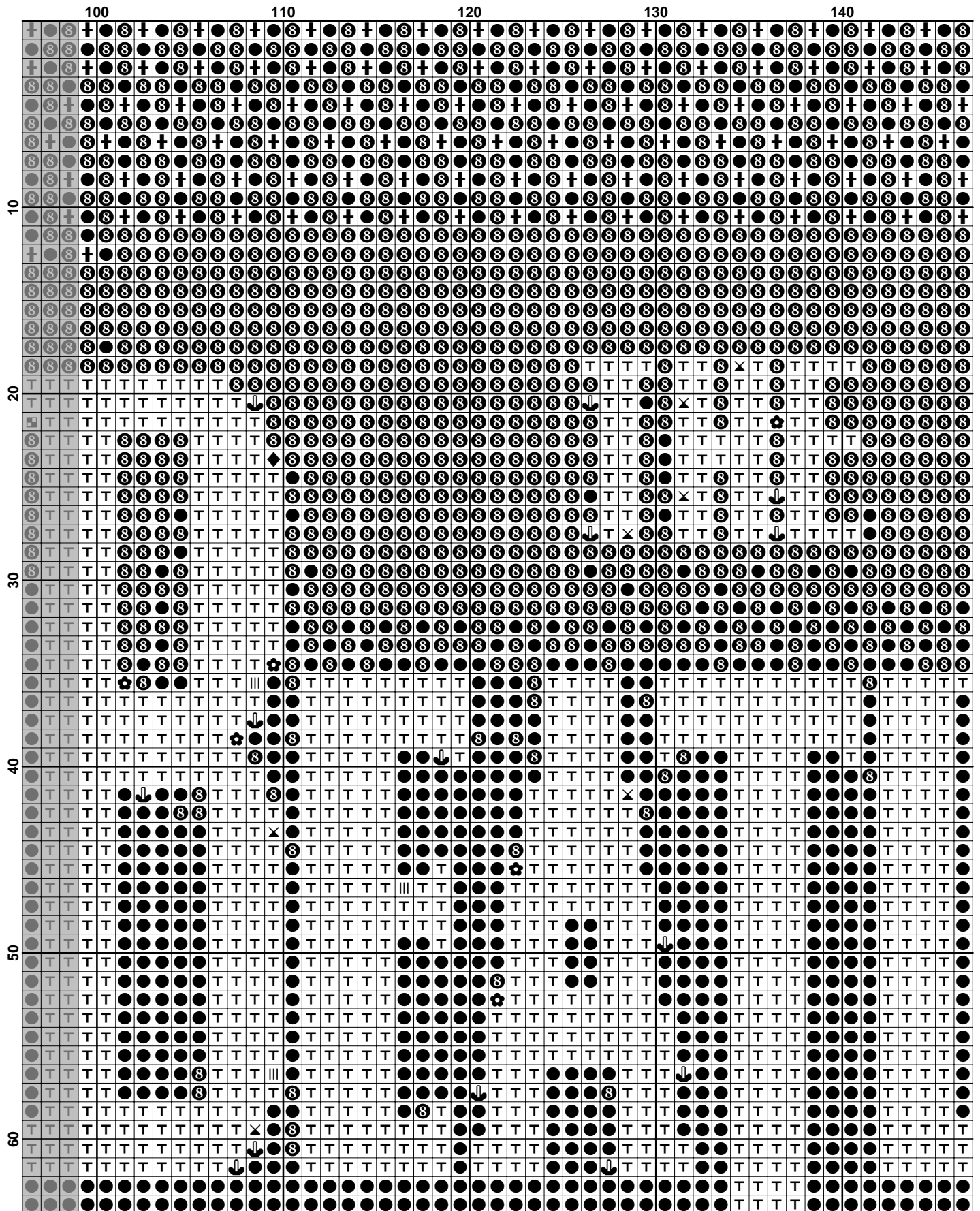


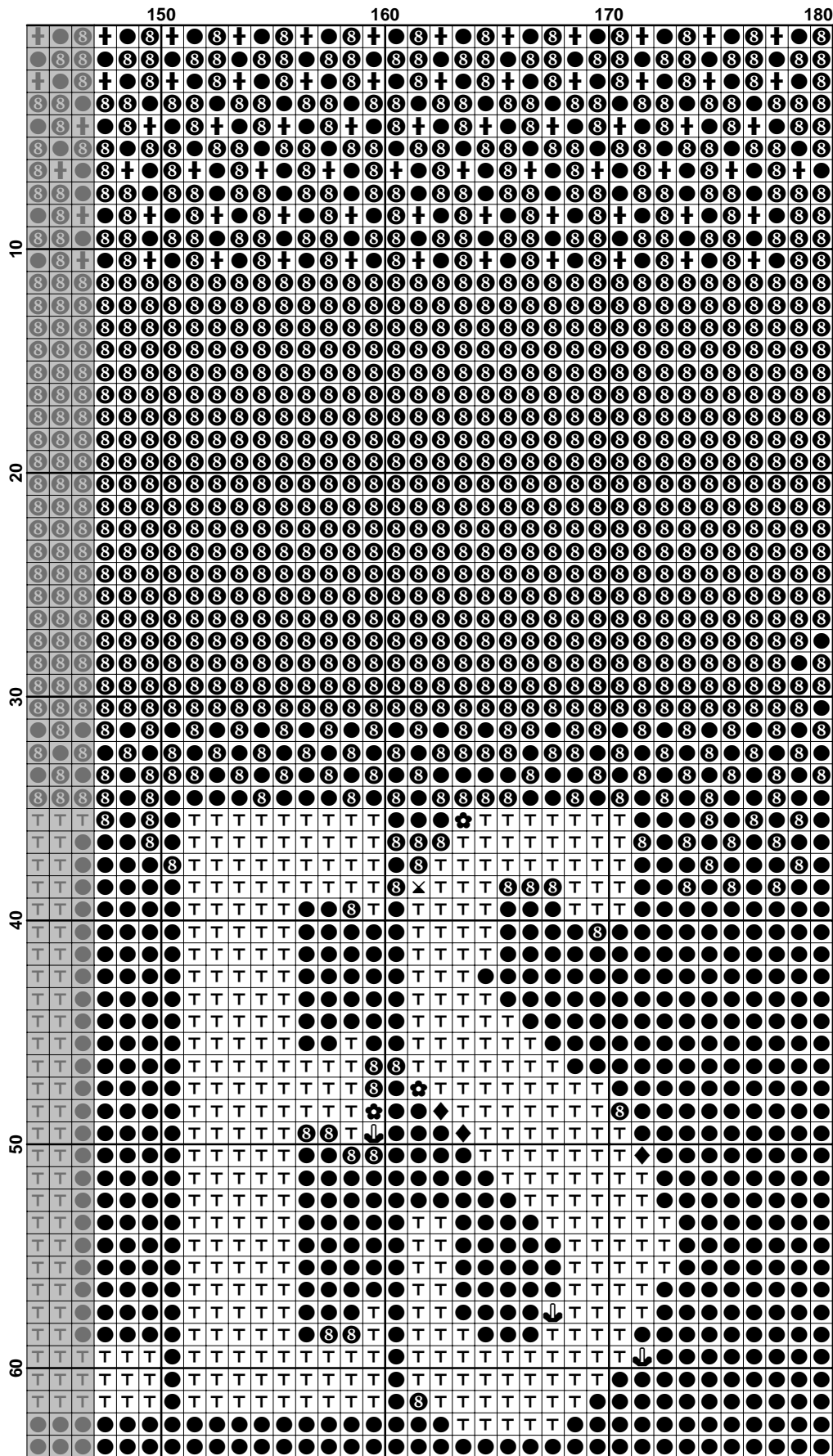
About the Art

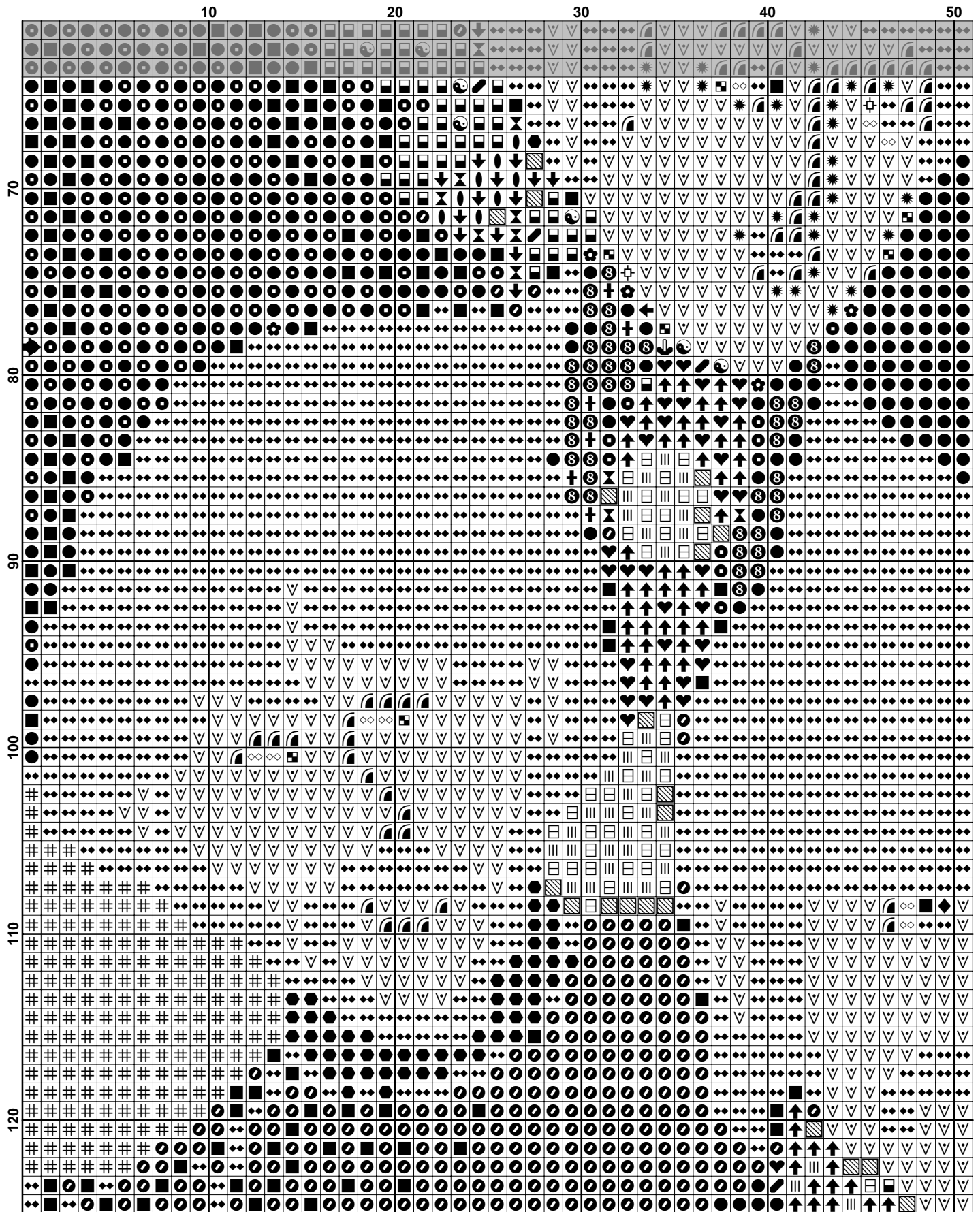
Yellow Submarine is a 1968 animated feature film based on the music of The Beatles. It is also the title for the soundtrack album to the feature film, released as part of The Beatles' music catalogue. The film was directed by Canadian-born animation producer George Dunning, and produced by United Artists and King Features Syndicate. The Beatles themselves appear only in the closing scene of the film, with the Beatles characters in the film voiced by other actors.

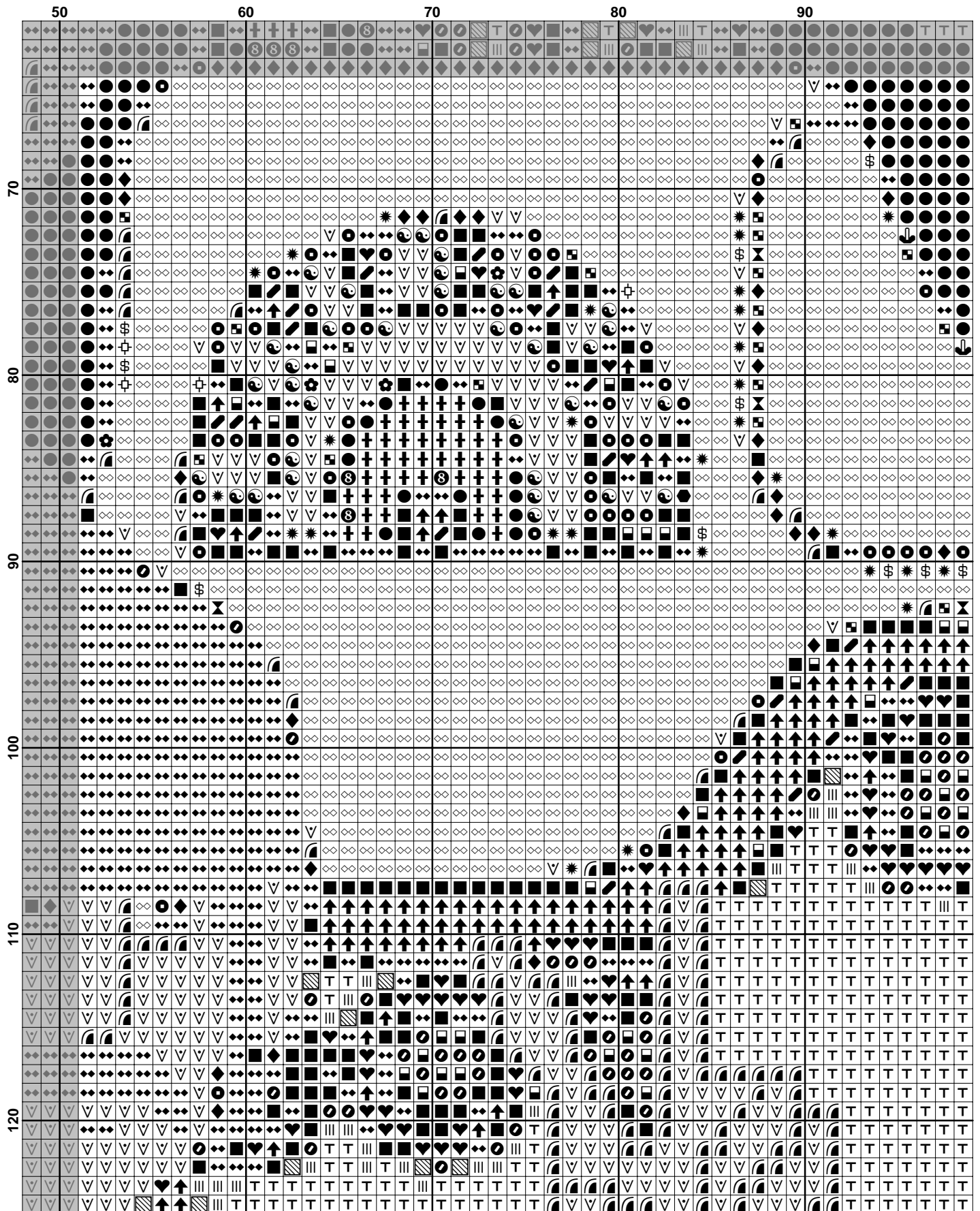


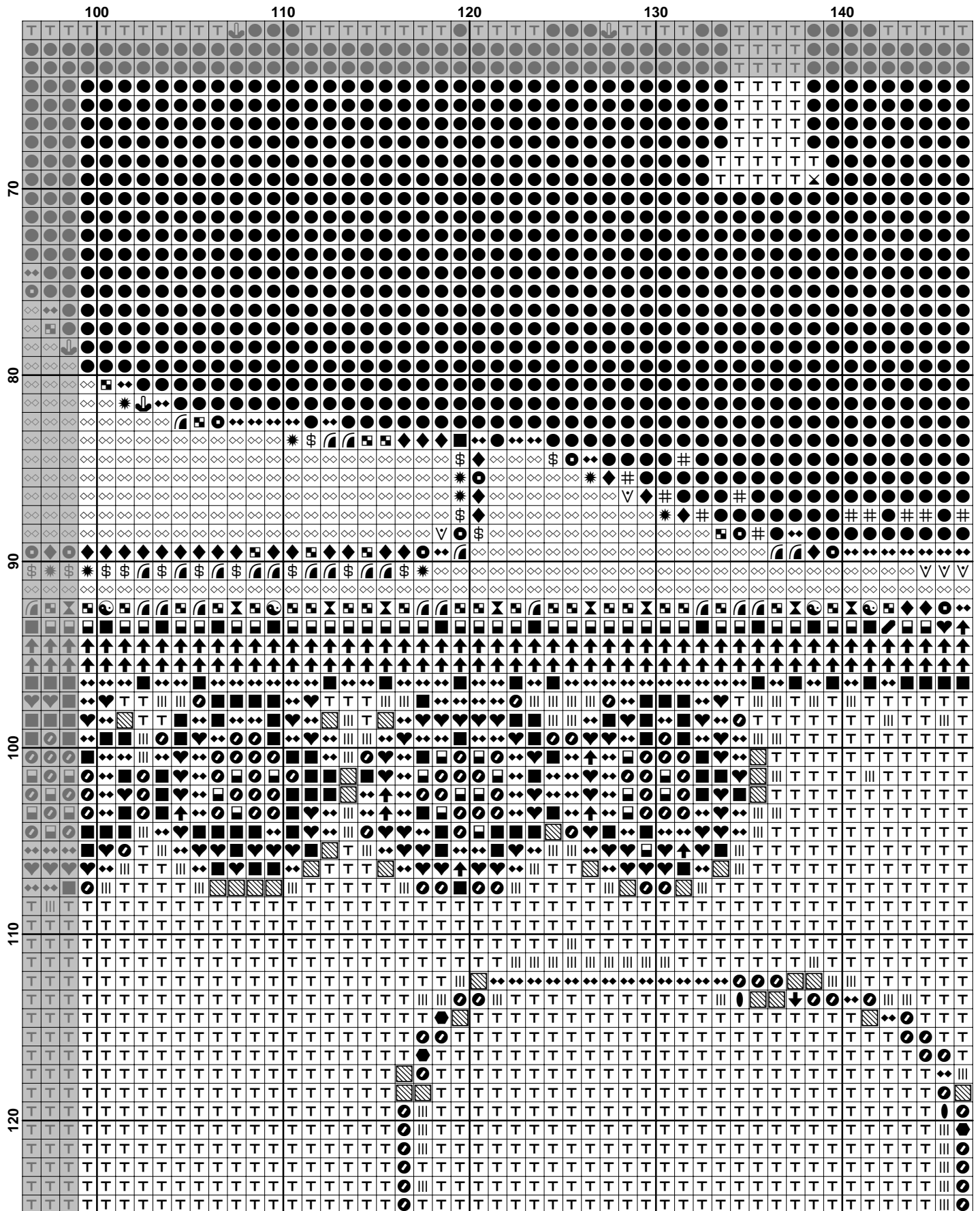


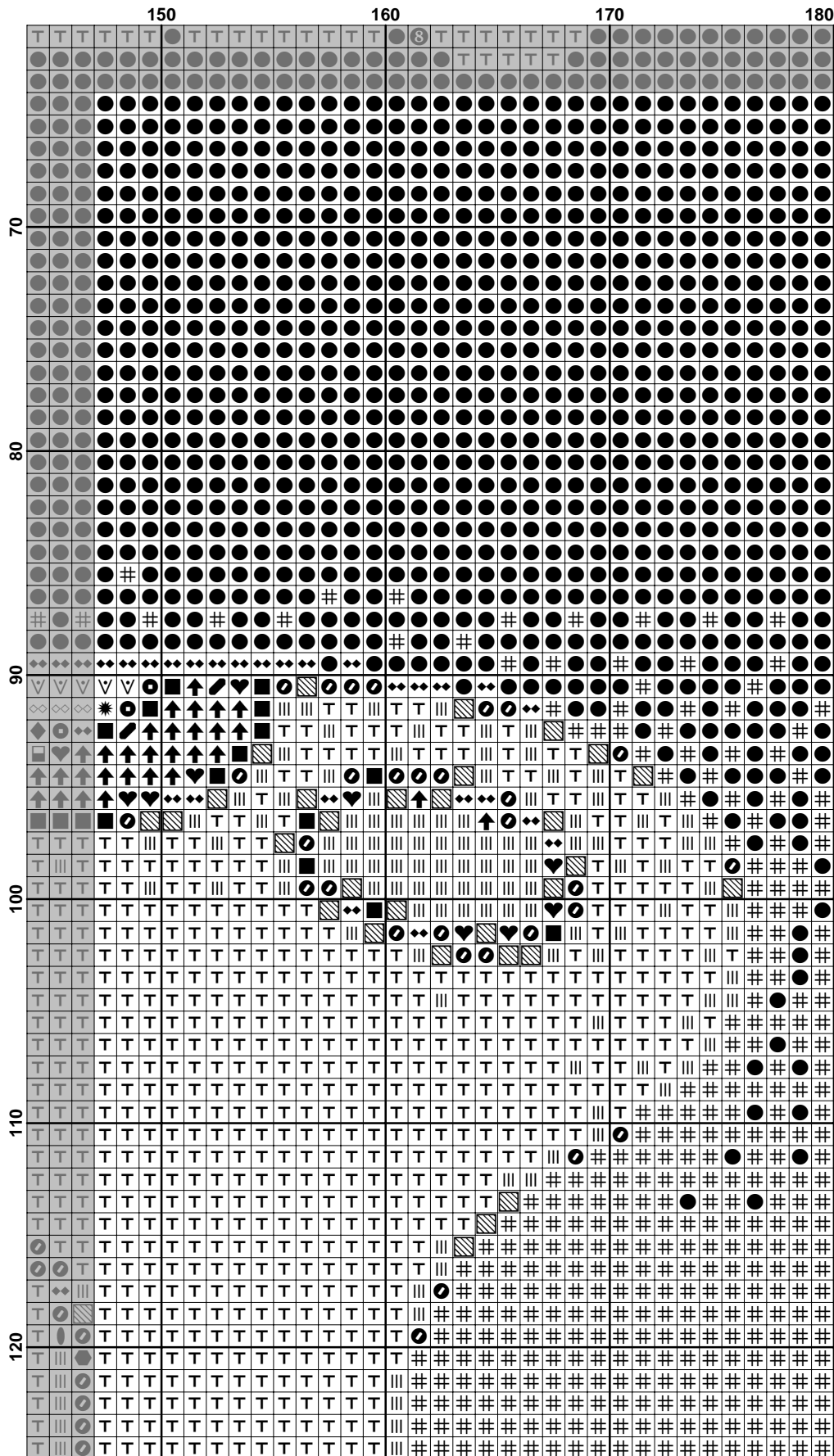


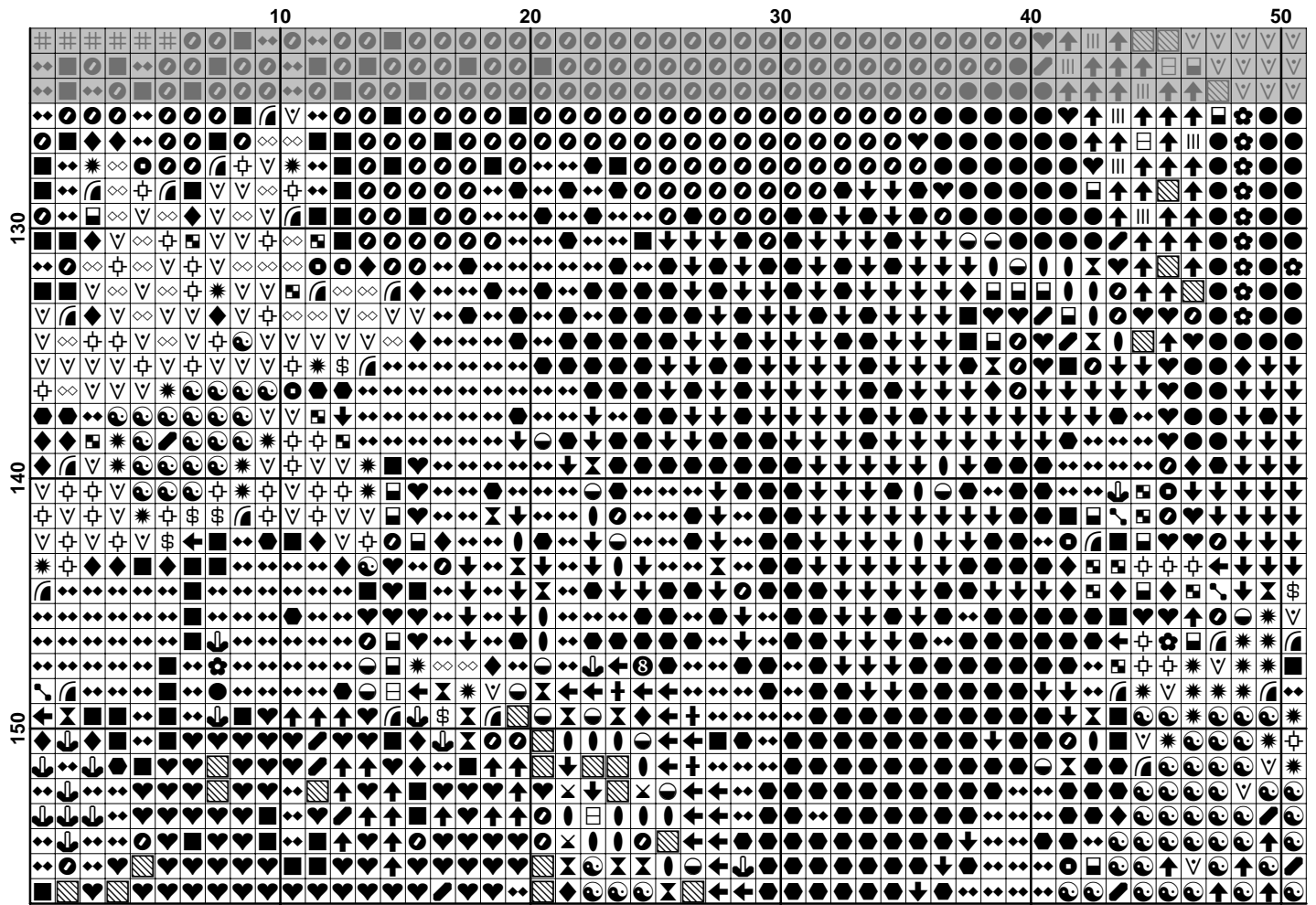


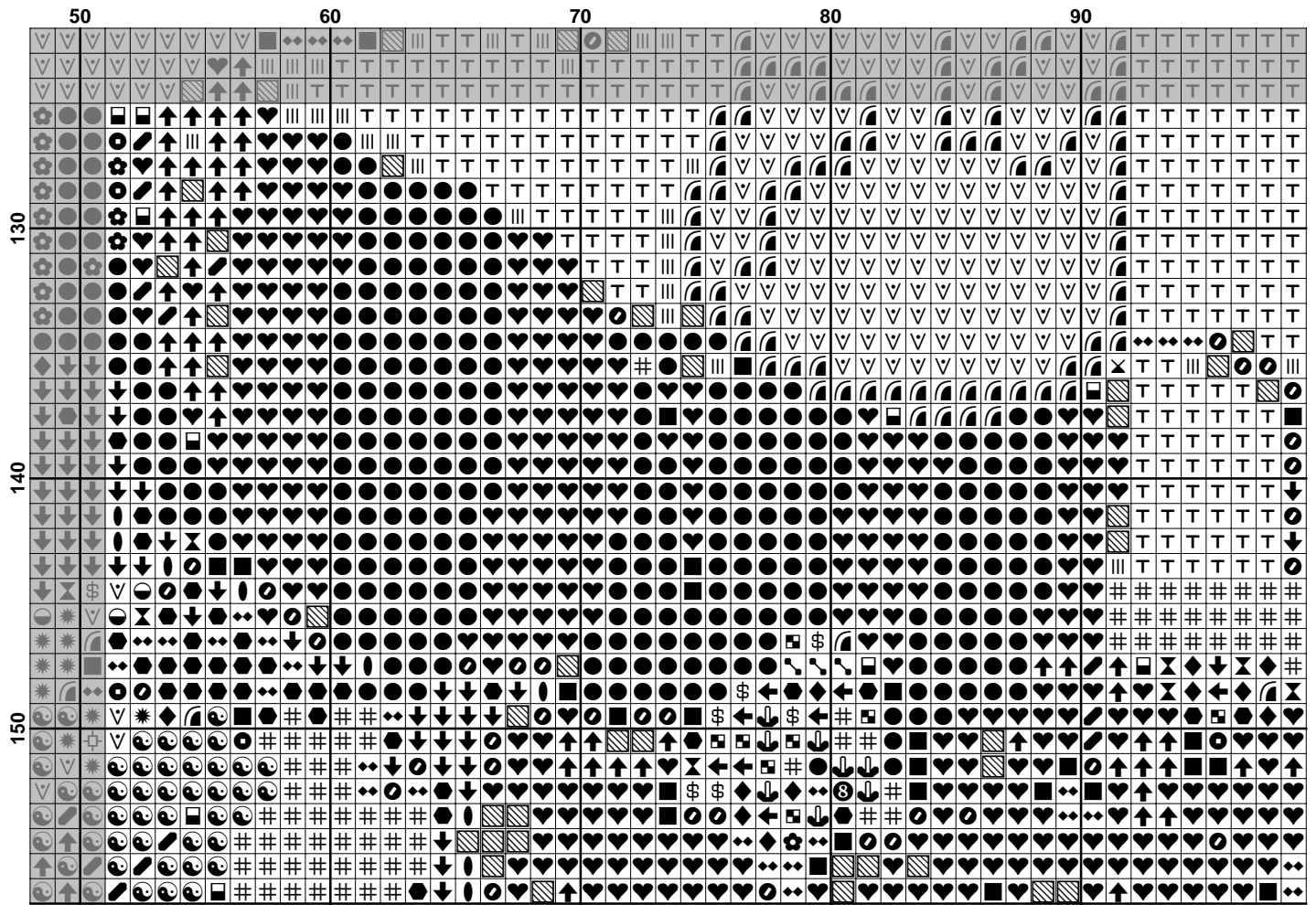


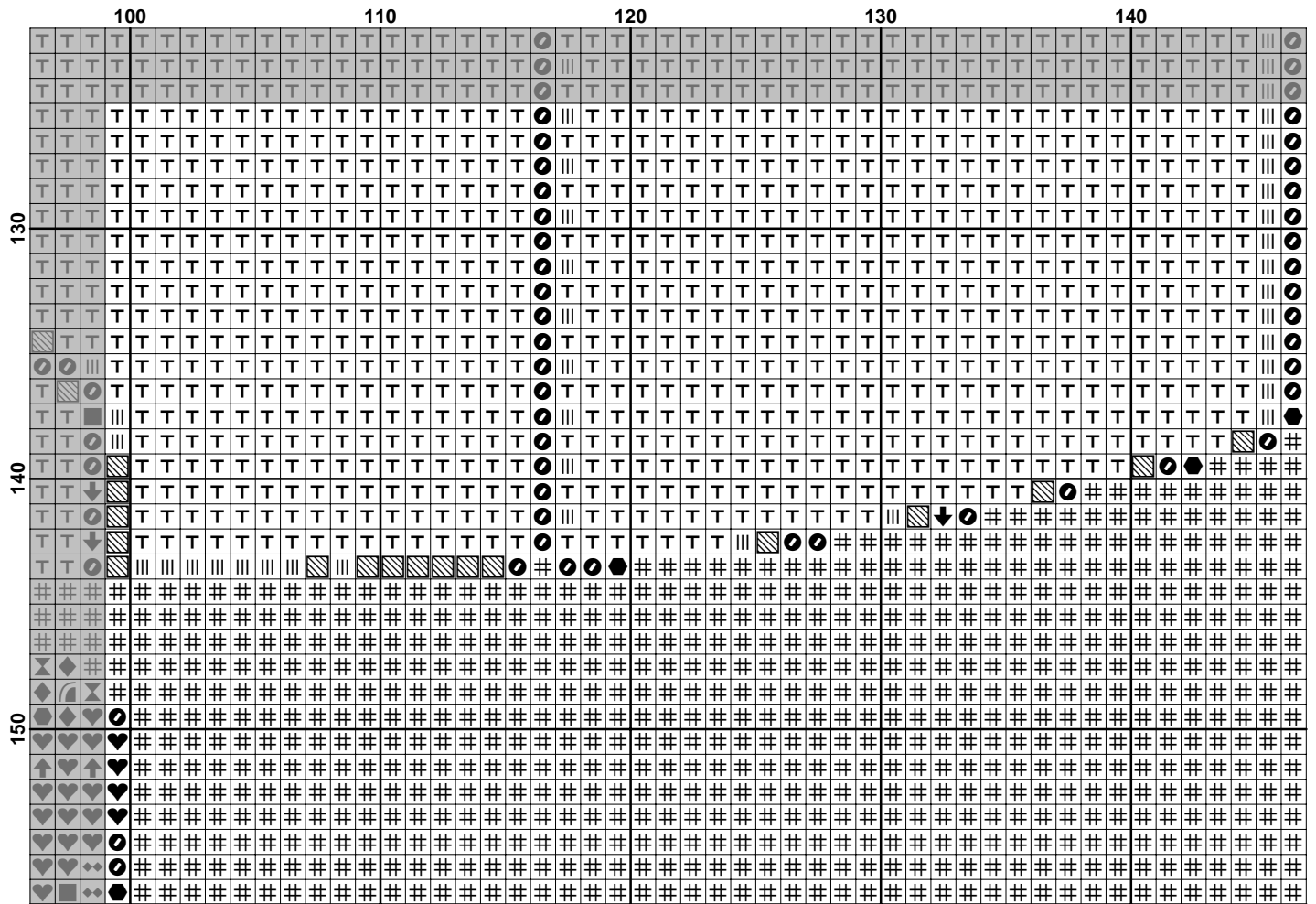












Pattern Name: Yellow Submarine
Designed By: Beatles
Company: <http://www.pinoystitch.org>
Fabric: Aida 14, White
 180w X 157h Stitches
Size(s): 14 Count, 12-3/4w X 11-1/8h in
 16 Count, 11-1/4w X 9-3/4h in
 18 Count, 10w X 8-5/8h in
 21 Count, 8-1/2w X 7-3/8h in

Floss Used for Full Stitches:

Symbol	Strands	Type	Number	Color
	2	DMC	150	Dusty Rose-UL VY DK
	2	DMC	154	Grape-VY DK
	2	DMC	159	Gray Blue-LT
	2	DMC	161	Gray Blue
	2	DMC	310	Black
	2	DMC	326	Rose-VY DK
	2	DMC	413	Pewter Gray-DK
	2	DMC	550	Violet-VY DK
	2	DMC	598	Turquoise-LT
	2	DMC	606	Bright Orange-Red
	2	DMC	704	Chartreuse-BRT
	2	DMC	791	Cornflower Blue-VY DK
	2	DMC	796	Royal Blue-DK
	2	DMC	803	Baby Blue-UL VY DK
	2	DMC	817	Coral Red-VY DK
	2	DMC	820	Royal Blue-VY DK
	2	DMC	832	Golden Olive
	2	DMC	890	Pistachio Green-UL DK
	2	DMC	898	Coffee Brown-VY DK
	2	DMC	905	Parrot Green-DK
	2	DMC	907	Parrot Green-LT
	2	DMC	939	Navy Blue-VY DK
	2	DMC	950	Desert Sand-LT
	2	DMC	972	Canary-DK
	2	DMC	973	Canary-BRT
	2	DMC	977	Golden Brown-LT
	2	DMC	3012	Khaki Green-MD
	2	DMC	3607	Plum-LT
	2	DMC	3727	Antique Mauve-LT
	2	DMC	3770	Tawny-VY LT
	2	DMC	3810	Turquoise-DK
	2	DMC	3813	Blue Green-LT
	2	DMC	3821	Straw
	2	DMC	3843	Electric Blue
	2	DMC	3861	Cocoa-LT

Notes:

Copyright is owned by artist. Patterns are for personal use only and should not be distributed or made into kits for resale.

Usage Summary

Strands Per Skein: 6

Skein Length: 313.0 in

Type	Number	Full	Half	Quarter	Petite	Back(in)	Str(in)	Spec(in)	French	Bead	Skein Est.
DMC 150	150	300	0	0	0	0.0	0.0	0.0	0	0	1.000
DMC 154	154	606	0	0	0	0.0	0.0	0.0	0	0	1.000
DMC 159	159	50	0	0	0	0.0	0.0	0.0	0	0	1.000
DMC 161	161	85	0	0	0	0.0	0.0	0.0	0	0	1.000
DMC 310	310	3037	0	0	0	0.0	0.0	0.0	0	0	2.000
DMC 326	326	98	0	0	0	0.0	0.0	0.0	0	0	1.000
DMC 413	413	155	0	0	0	0.0	0.0	0.0	0	0	1.000
DMC 550	550	303	0	0	0	0.0	0.0	0.0	0	0	1.000
DMC 598	598	6	0	0	0	0.0	0.0	0.0	0	0	1.000
DMC 606	606	504	0	0	0	0.0	0.0	0.0	0	0	1.000
DMC 704	704	20	0	0	0	0.0	0.0	0.0	0	0	1.000
DMC 791	791	37	0	0	0	0.0	0.0	0.0	0	0	1.000
DMC 796	796	3976	0	0	0	0.0	0.0	0.0	0	0	2.000
DMC 803	803	51	0	0	0	0.0	0.0	0.0	0	0	1.000
DMC 817	817	660	0	0	0	0.0	0.0	0.0	0	0	1.000
DMC 820	820	5543	0	0	0	0.0	0.0	0.0	0	0	3.000
DMC 832	832	266	0	0	0	0.0	0.0	0.0	0	0	1.000
DMC 890	890	368	0	0	0	0.0	0.0	0.0	0	0	1.000
DMC 898	898	734	0	0	0	0.0	0.0	0.0	0	0	1.000
DMC 905	905	305	0	0	0	0.0	0.0	0.0	0	0	1.000
DMC 907	907	119	0	0	0	0.0	0.0	0.0	0	0	1.000
DMC 939	939	2219	0	0	0	0.0	0.0	0.0	0	0	1.000
DMC 950	950	1269	0	0	0	0.0	0.0	0.0	0	0	1.000
DMC 972	972	442	0	0	0	0.0	0.0	0.0	0	0	1.000
DMC 973	973	4413	0	0	0	0.0	0.0	0.0	0	0	2.000
DMC 977	977	45	0	0	0	0.0	0.0	0.0	0	0	1.000
DMC 3012	3012	76	0	0	0	0.0	0.0	0.0	0	0	1.000
DMC 3607	3607	208	0	0	0	0.0	0.0	0.0	0	0	1.000
DMC 3727	3727	110	0	0	0	0.0	0.0	0.0	0	0	1.000
DMC 3770	3770	1345	0	0	0	0.0	0.0	0.0	0	0	1.000
DMC 3810	3810	32	0	0	0	0.0	0.0	0.0	0	0	1.000
DMC 3813	3813	40	0	0	0	0.0	0.0	0.0	0	0	1.000
DMC 3821	3821	14	0	0	0	0.0	0.0	0.0	0	0	1.000
DMC 3843	3843	446	0	0	0	0.0	0.0	0.0	0	0	1.000
DMC 3861	3861	378	0	0	0	0.0	0.0	0.0	0	0	1.000