

## MASTERS OF PHILIPPINE ART SERIES

*The Masters of Philippine Art Series is being brought to you FREE by Pinoystitch as tribute and celebration to the great artists of the Philippines.*

FEATURED ARTIST    FELIX RESURRECCION HIDALGO (1953-1913)

Pattern Name    La Puesta Del Sol (1901)  
Designed by    Felix Resurreccion Hidalgo  
Website    <http://www.pinoystitch.org>  
Colors    49  
Stitches    230 x 179  
Sizes\*    14 count    16 w x 13 h Inches  
              16 count    14 w x 11 h Inches  
              18 count    13 w x 10 h Inches  
              21 count    11 w x 9 h Inches

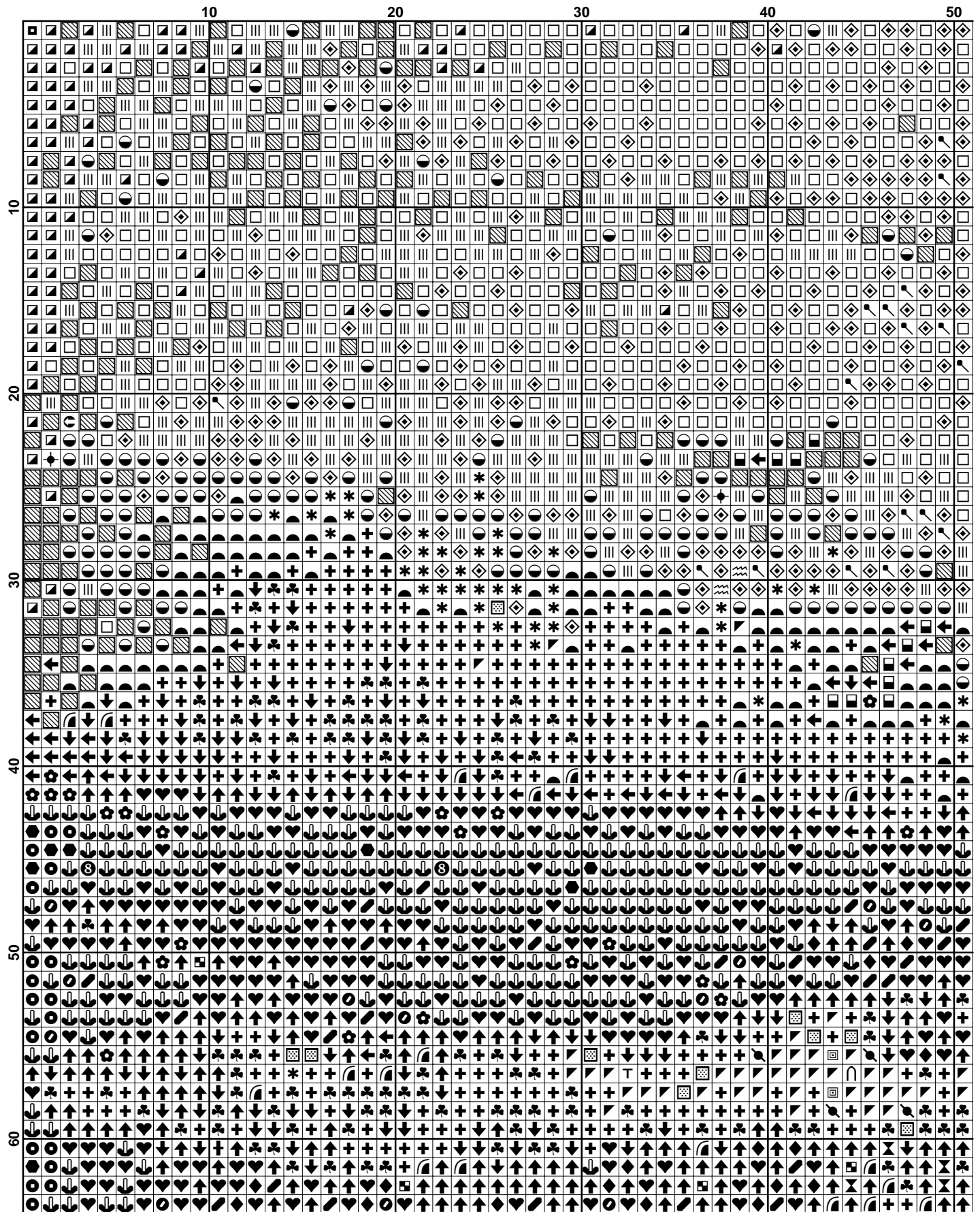
\*Pattern sizes do not include margins. Ideally you should add 2" on all sides.

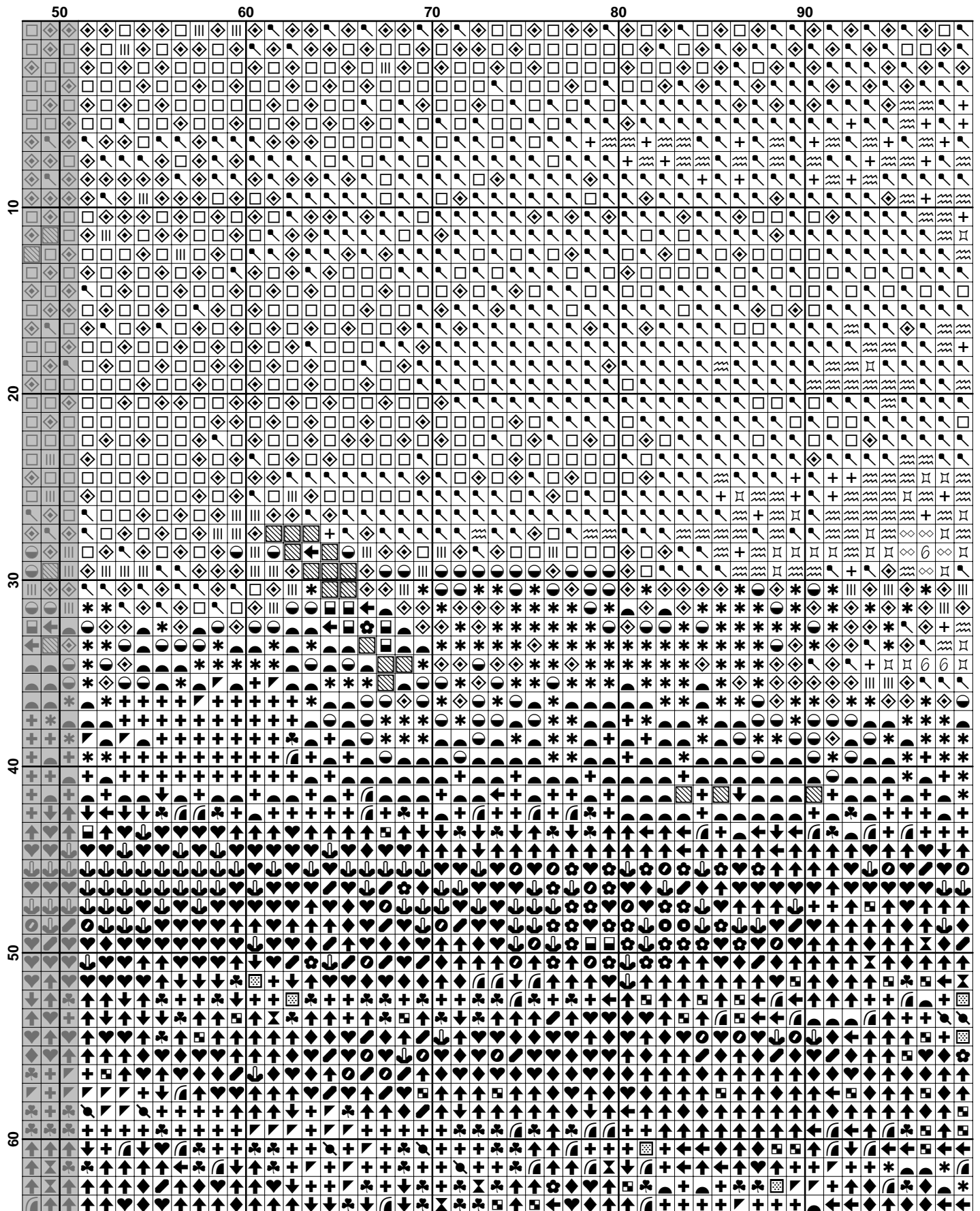


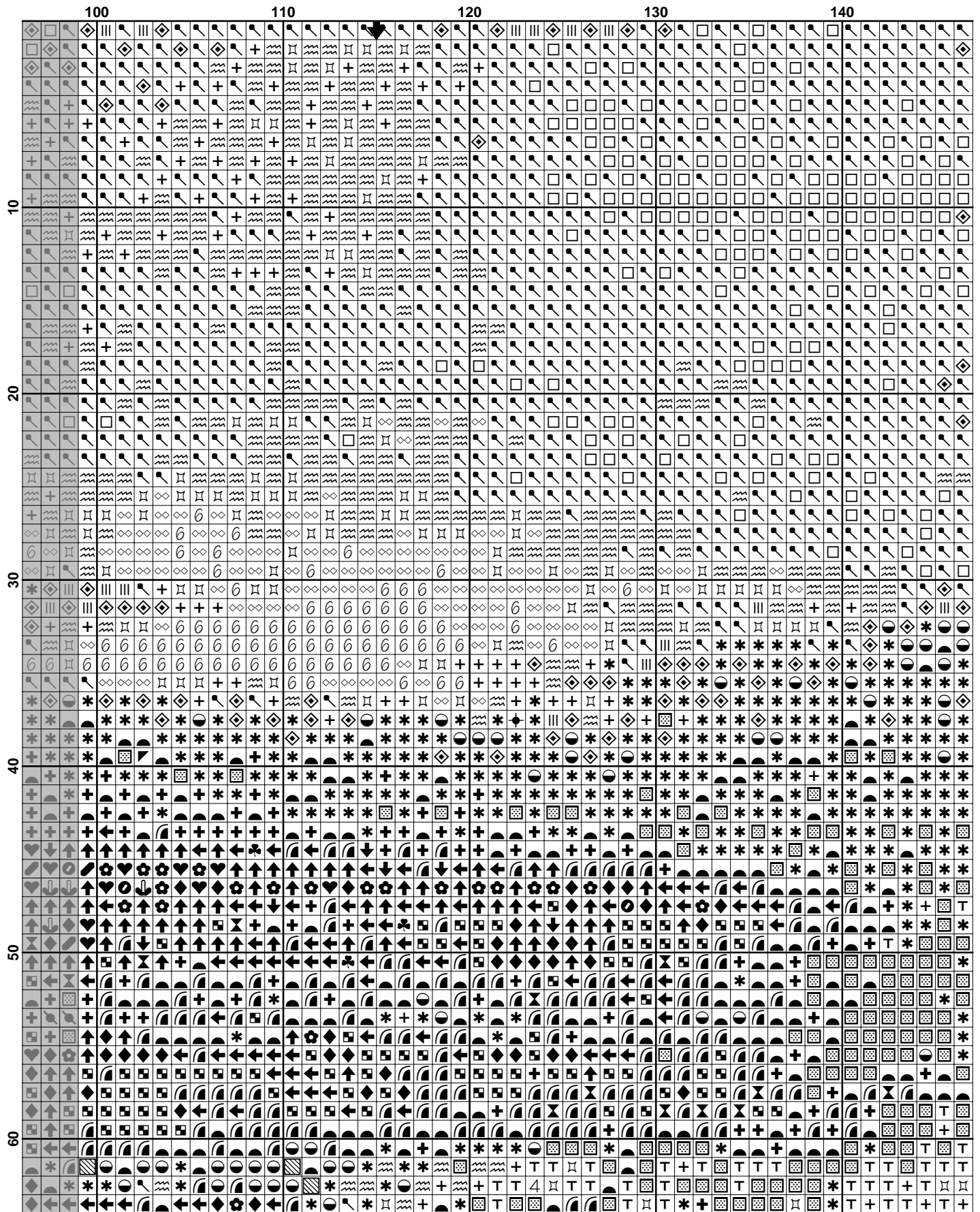
### About the Artist

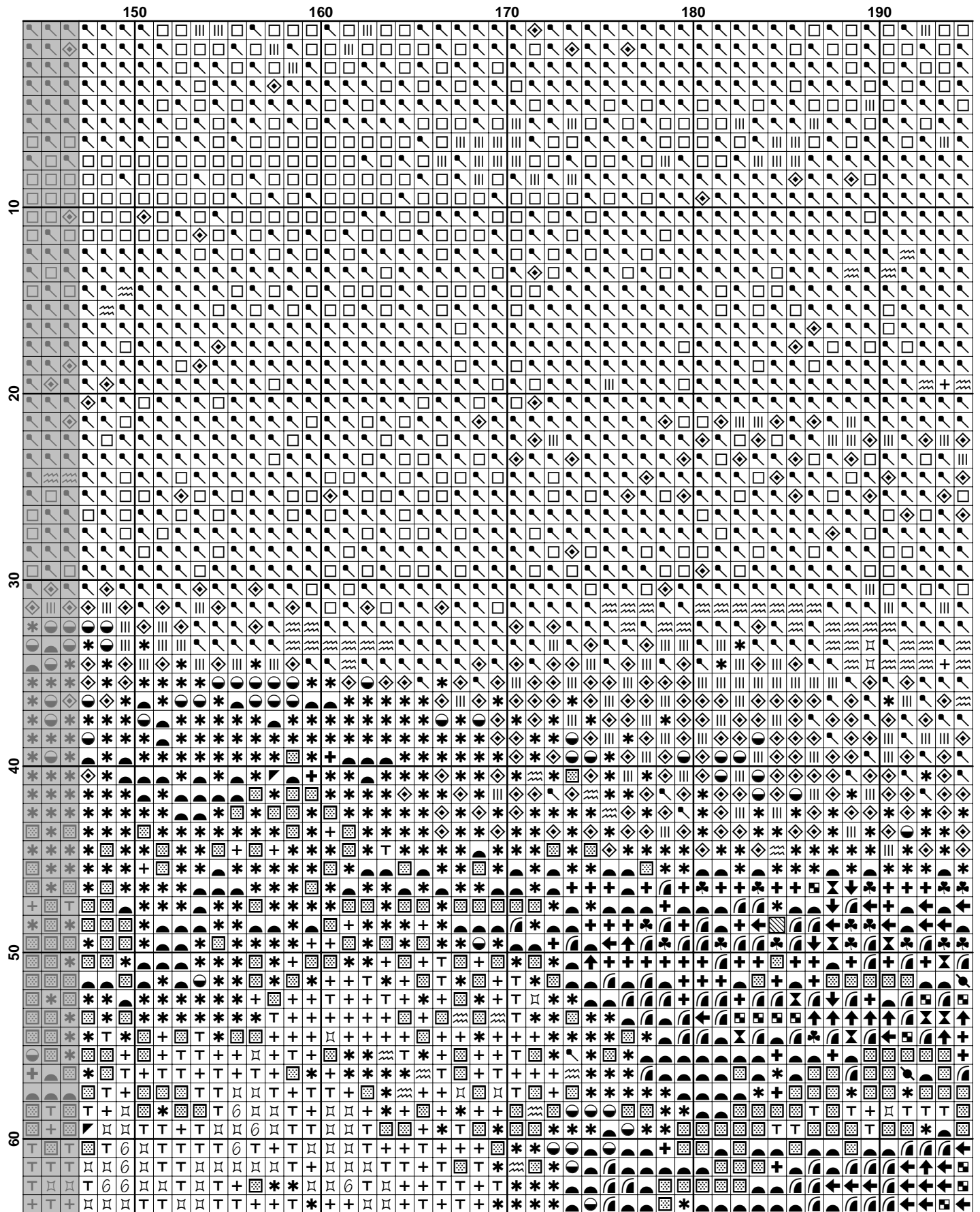


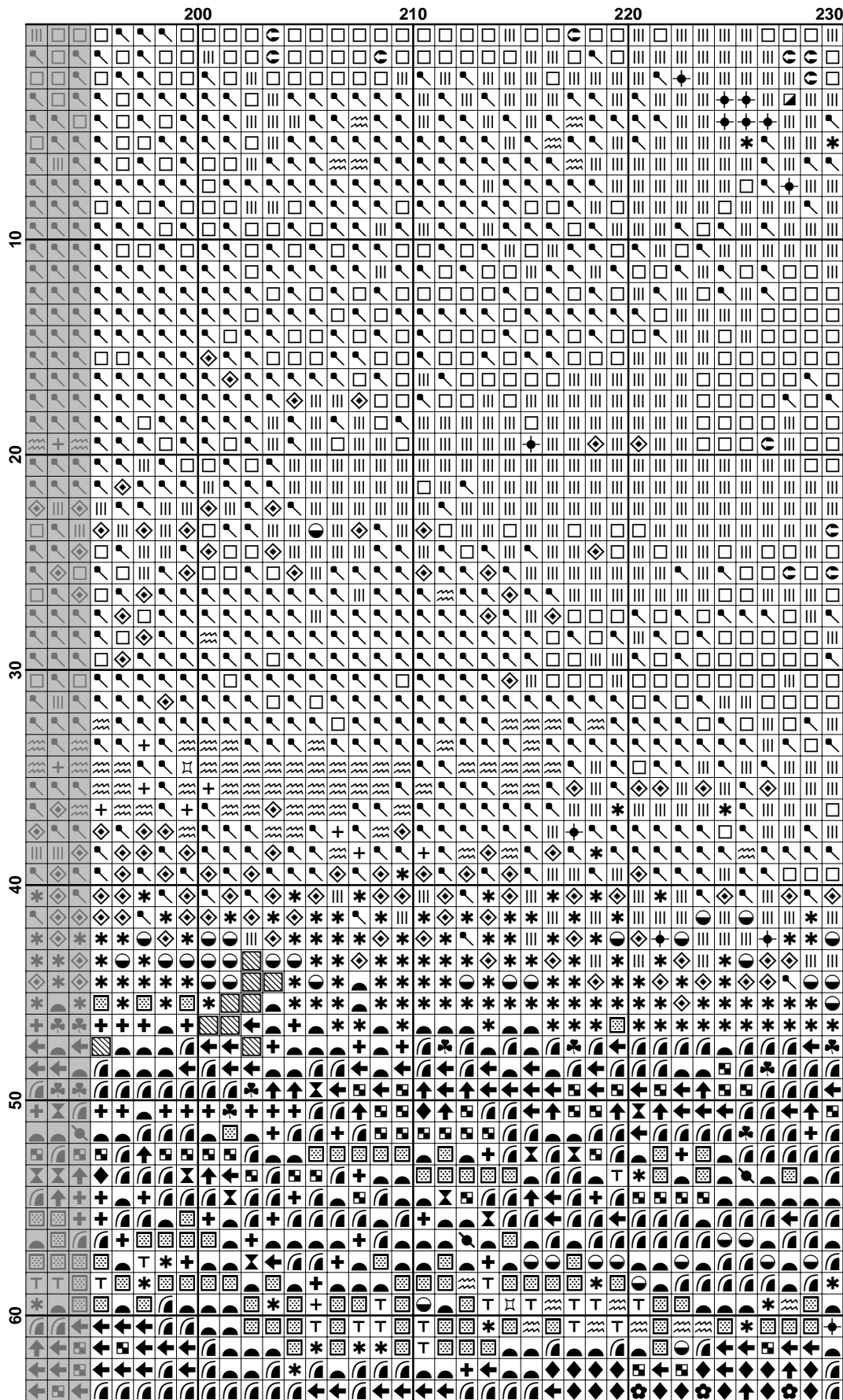
FELIX RESURRECCION HIDALGO'S (1853-1913) place in Philippine Art was secured in the last quarter of the nineteenth century through his large Neoclassical canvases which harvested Gold and Silver Medals in prestigious International Exhibitions. His paintings portray a delicate sensibility, which a critic has described as "more pure, more serene in feeling."

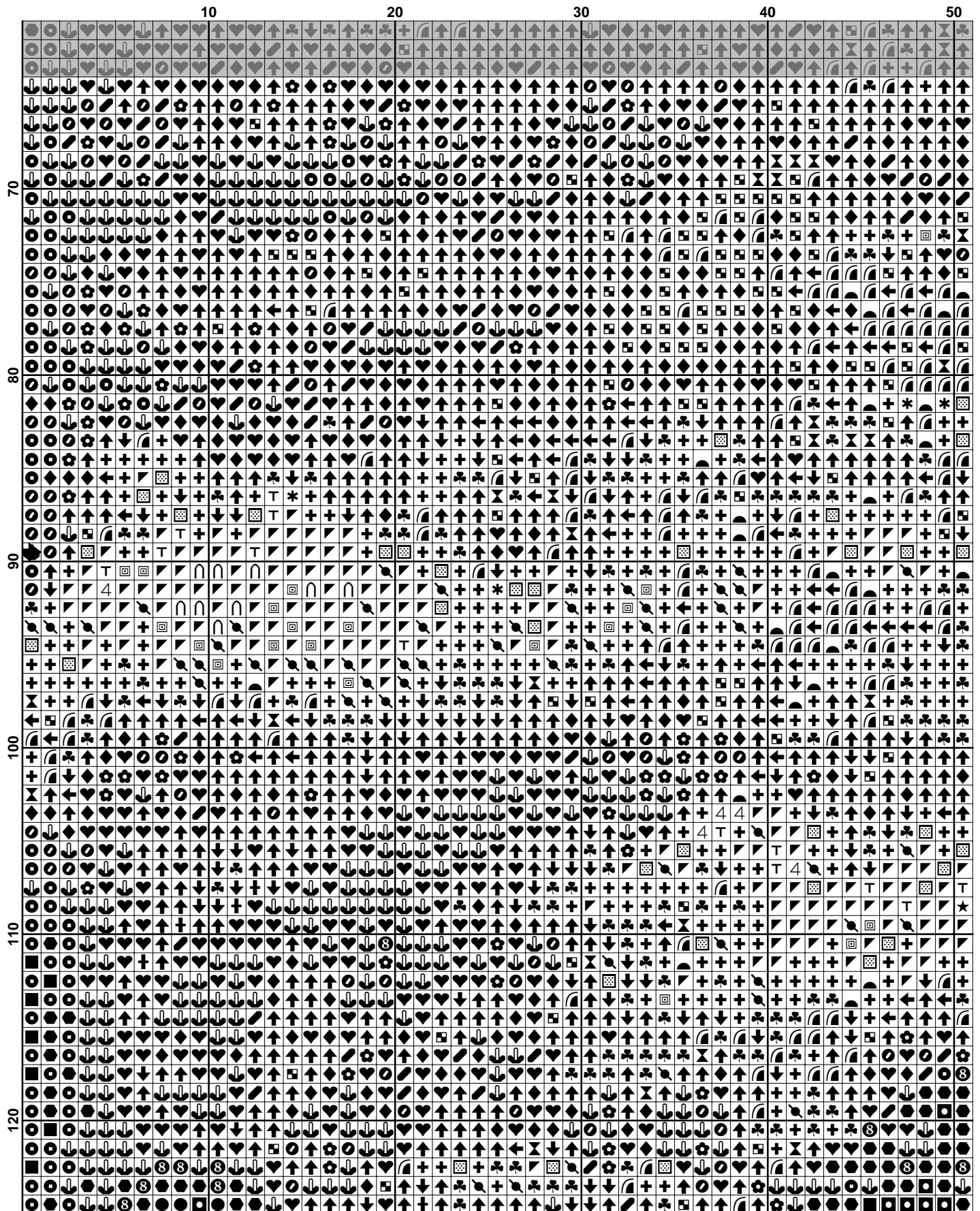


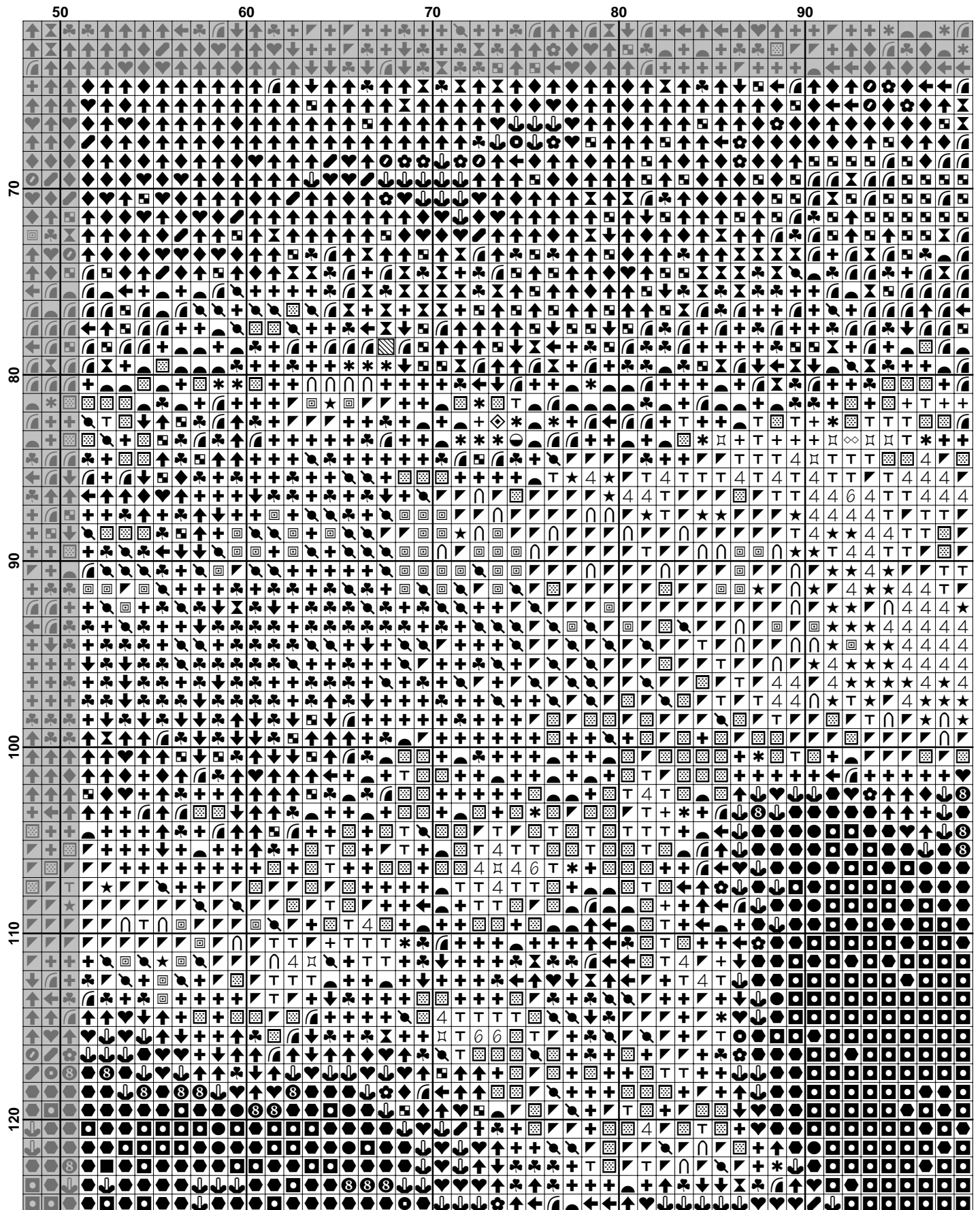


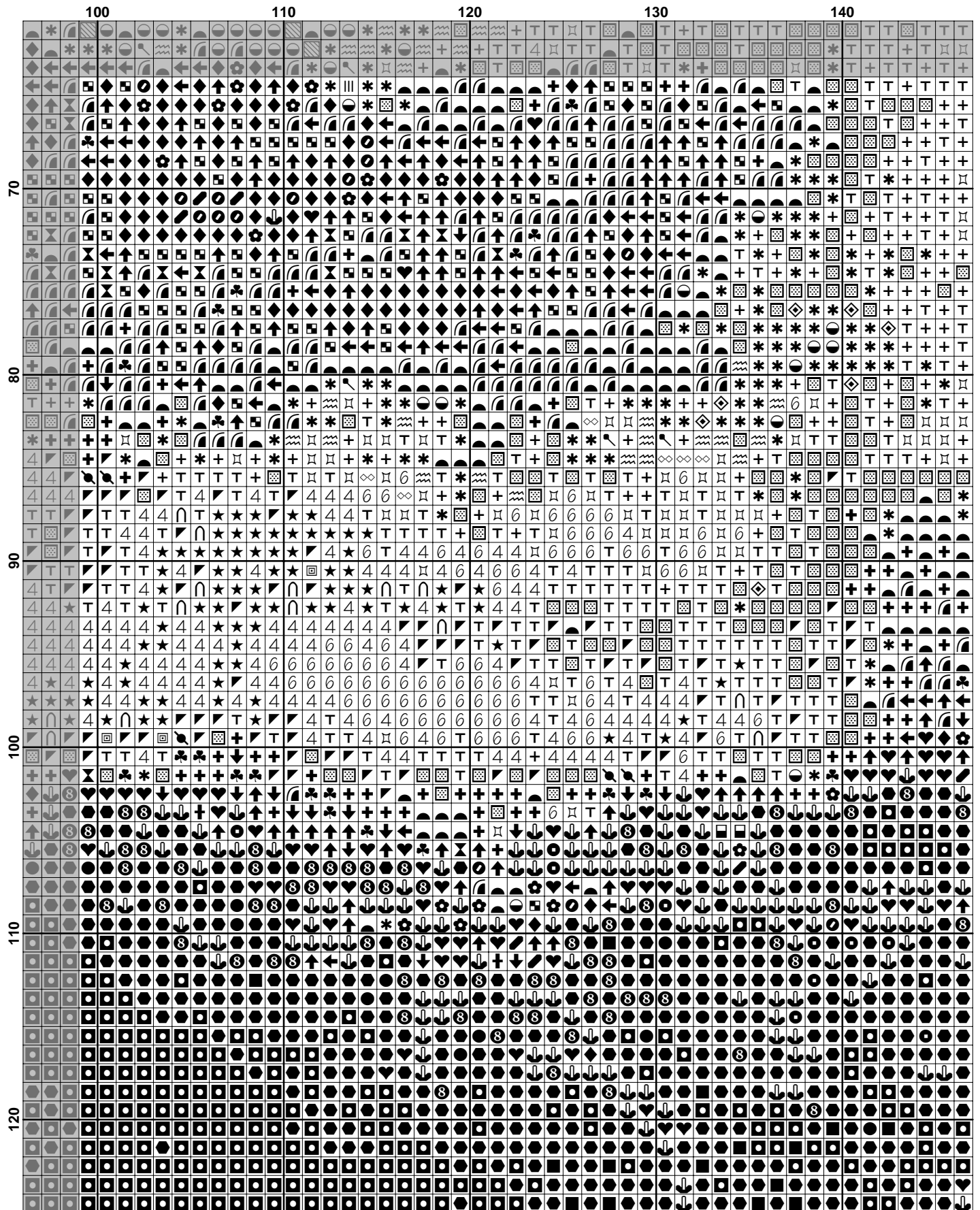


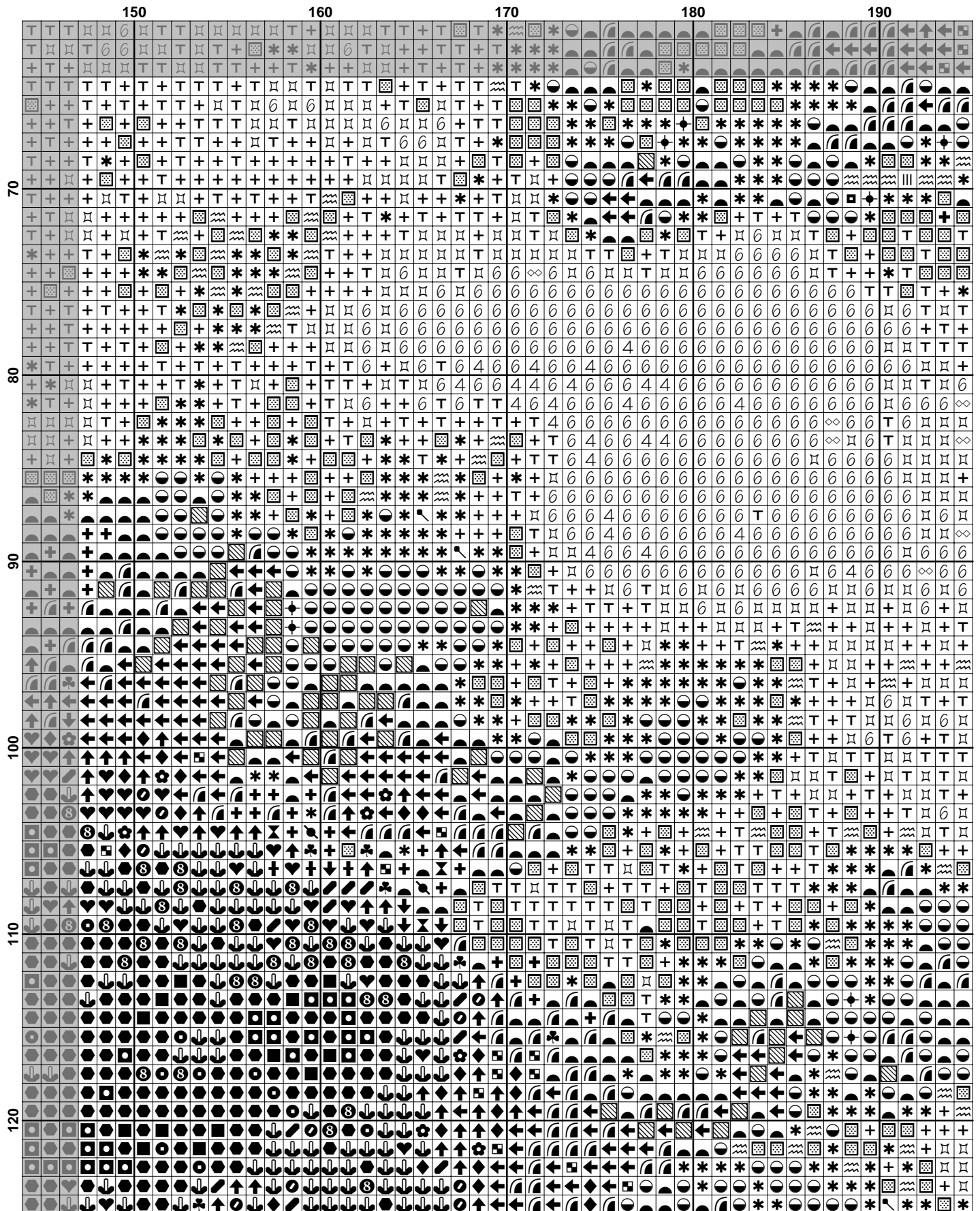


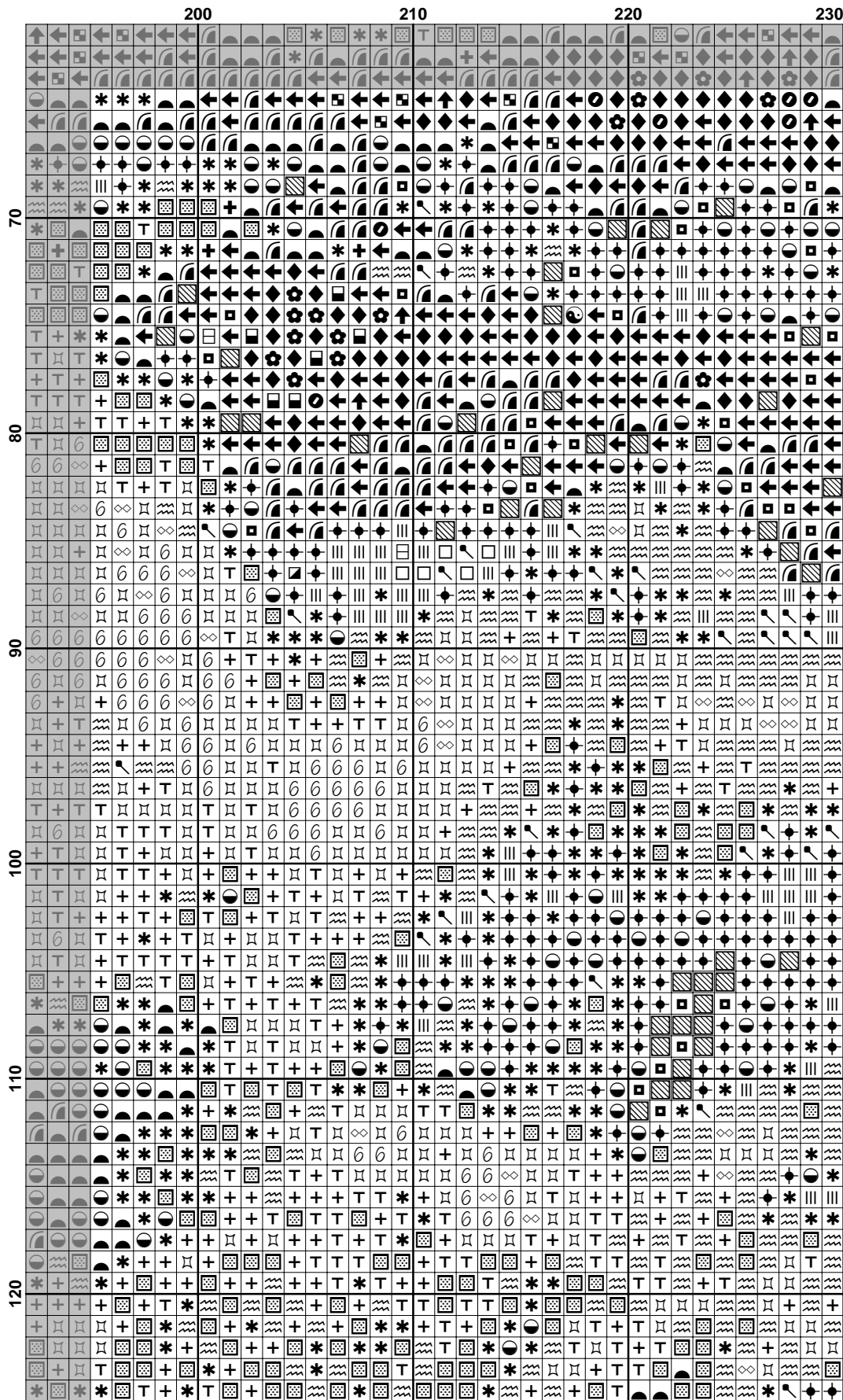


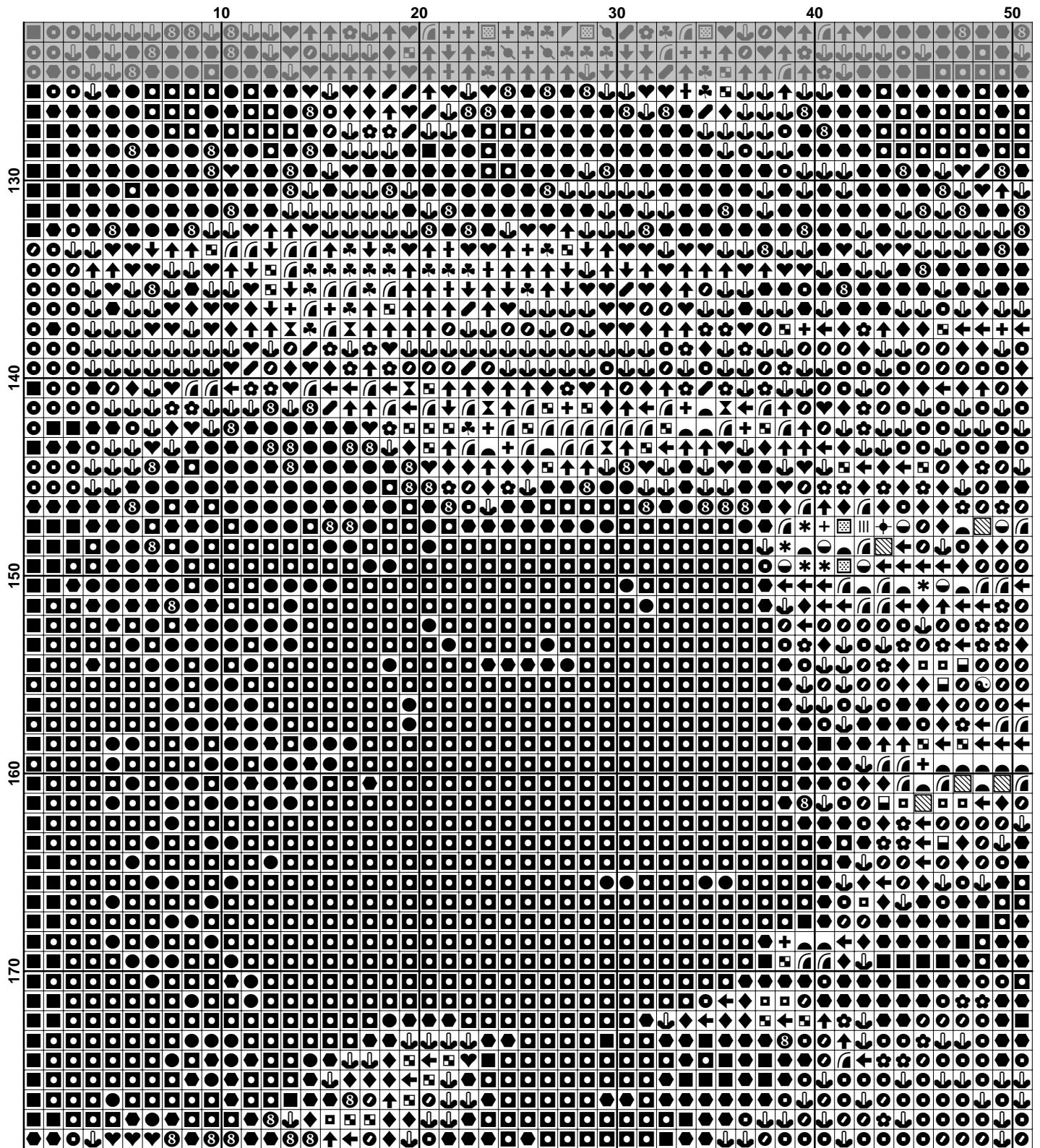


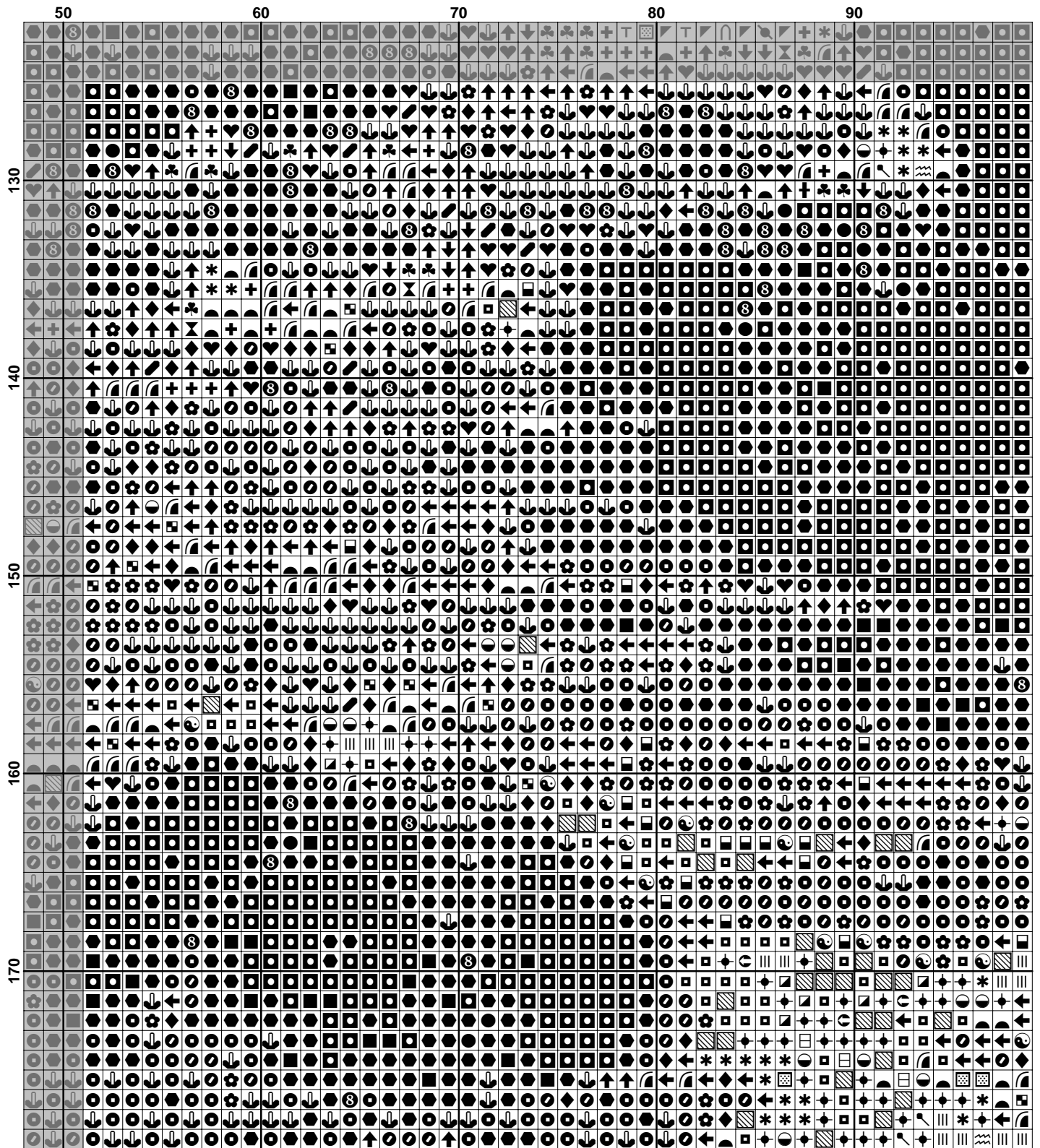


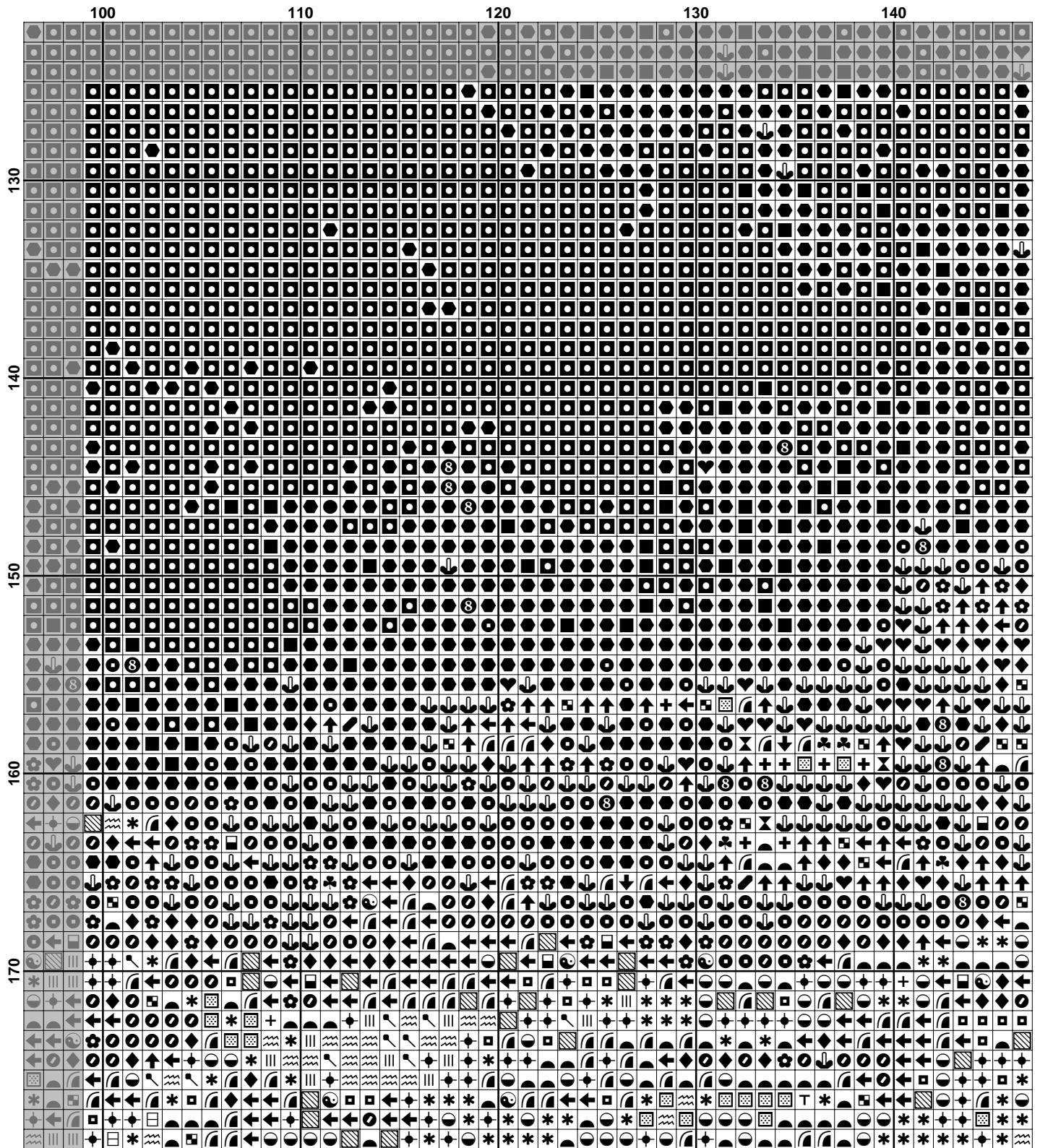


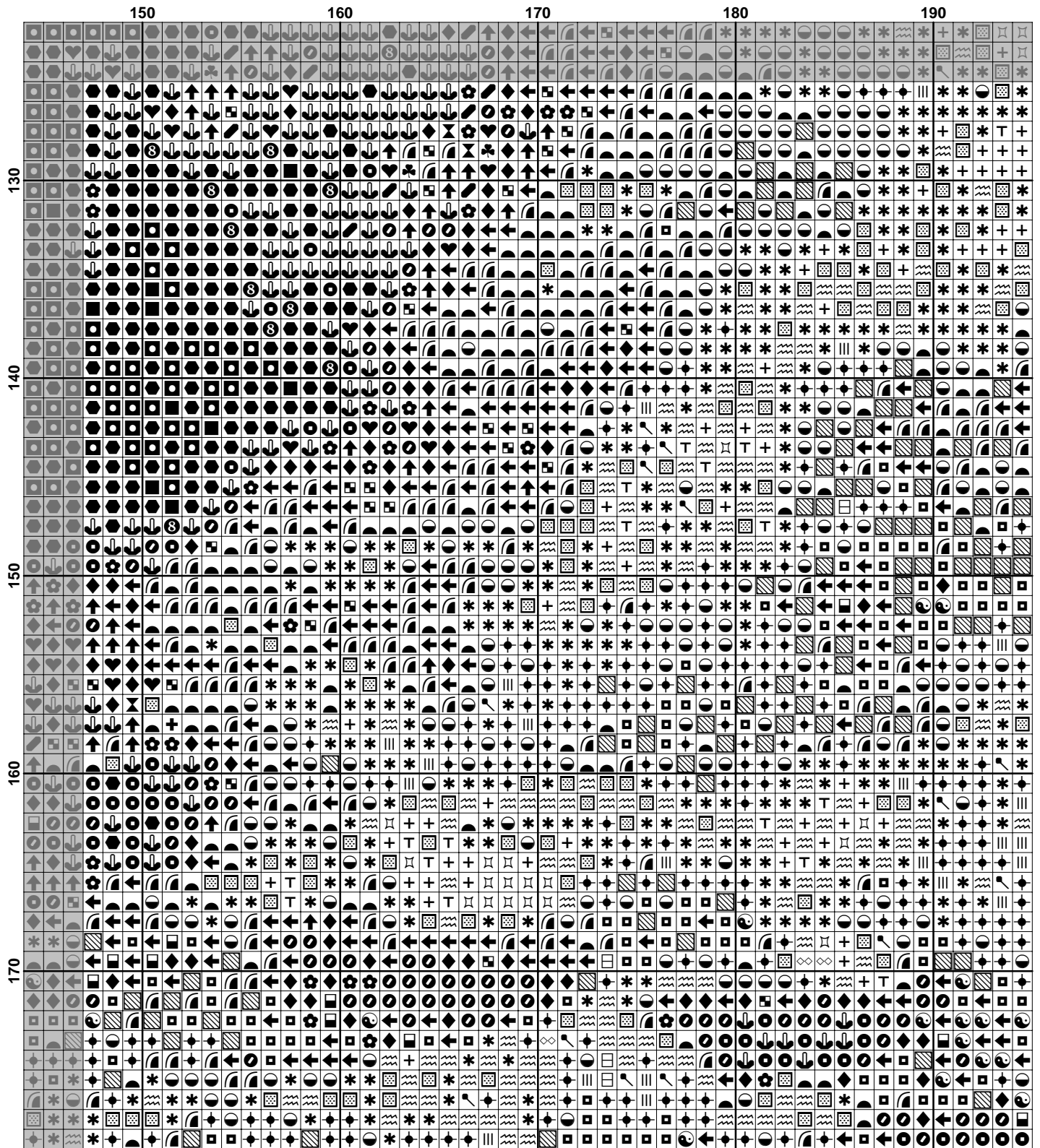


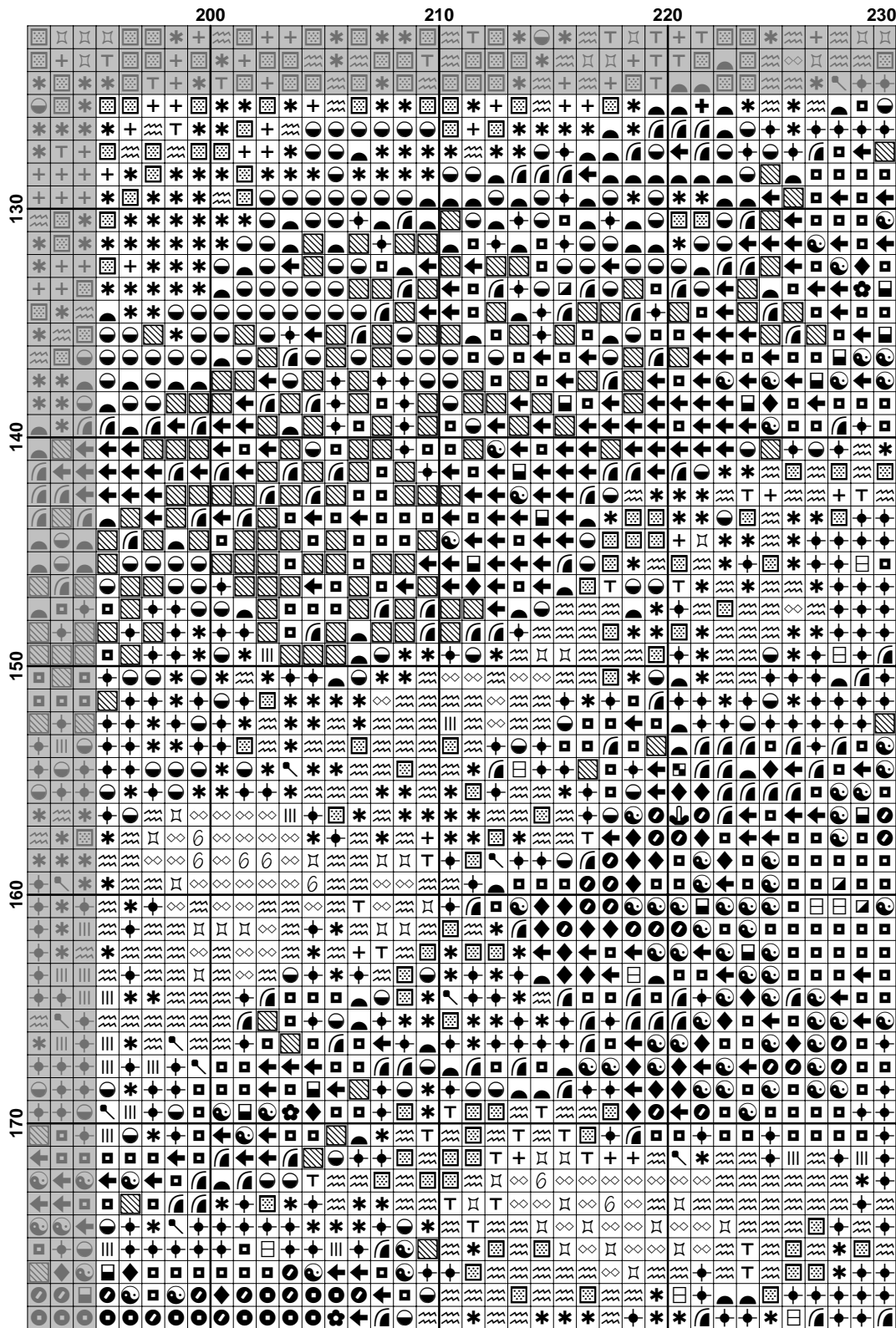






















**Pattern Name:** La Puesta del Sol  
**Designed By:** Felix Resurreccion Hidalgo  
**Company:** <http://www.pinoystitch.org>  
**Copyright:** Owned by Artist. Not for Distribution or Resale.  
**Fabric:** Aida 14, White  
 230w X 179h Stitches  
**Size(s):** 14 Count, 16-3/8w X 12-3/4h in  
 16 Count, 14-3/8w X 11-1/8h in  
 18 Count, 12-3/4w X 9-7/8h in  
 21 Count, 10-7/8w X 8-1/2h in

**Floss Used for Full Stitches:**

Symbol	Strands	Type	Number	Color
	2	DMC	154	Grape-VY DK
	2	DMC	168	Pewter-VY LT
	2	DMC	225	Shell Pink-UL VY LT
	2	DMC	310	Black
	2	DMC	318	Steel Gray-LT
	2	DMC	356	Terra Cotta-MD
	2	DMC	402	Mahogany-VY LT
	2	DMC	407	Desert Sand-DK
	2	DMC	415	Pearl Gray
	2	DMC	435	Brown-VY LT
	2	DMC	436	Tan
	2	DMC	451	Shell Gray-DK
	2	DMC	632	Desert Sand-UL VY DK
	2	DMC	640	Beige Gray-VY DK
	2	DMC	645	Beaver Gray-VY DK
	2	DMC	647	Beaver Gray-MD
	2	DMC	722	Orange Spice-LT
	2	DMC	729	Old Gold-MD
	2	DMC	754	Peach-LT
	2	DMC	760	Salmon
	2	DMC	779	Cocoa-DK
	2	DMC	823	Navy Blue-DK
	2	DMC	840	Beige Brown-MD
	2	DMC	842	Beige Brown-VY LT
	2	DMC	939	Navy Blue-VY DK
	2	DMC	977	Golden Brown-LT
	2	DMC	3041	Antique Violet-MD
	2	DMC	3042	Antique Violet-LT
	2	DMC	3064	Desert Sand
	2	DMC	3078	Golden Yellow-VY LT
	2	DMC	3721	Shell Pink-DK
	2	DMC	3740	Antique Violet-DK
	2	DMC	3743	Antique Violet-VY LT
	2	DMC	3772	Desert Sand-VY DK
	2	DMC	3773	Desert Sand-MD
	2	DMC	3776	Mahogany-LT
	2	DMC	3779	Terra Cotta-UL VY LT
	2	DMC	3787	Brown Gray-DK
	2	DMC	3799	Pewter Gray-VY DK
	2	DMC	3825	Pumpkin-Pale
	2	DMC	3829	Old Gold-VY DK
	2	DMC	3856	Mahogany-UL VY LT
	2	DMC	3857	Rosewood-DK
	2	DMC	3858	Rosewood-MD

Symbol	Strands	Type	Number	Color
 	2	DMC	3860	Cocoa
 	2	DMC	3861	Cocoa-LT
 	2	DMC	3862	Mocha Beige-DK
 	2	DMC	3863	Mocha Beige-MD
 	2	DMC	3864	Mocha Beige-LT

**Usage Summary****Strands Per Skein:** 6**Skein Length:** 313.0 in

Type	Number	Full	Half	Quarter	Petite	Back(in)	Str(in)	Spec(in)	French	Bead	Skein Est.
DMC	154	2468	0	0	0	0.0	0.0	0.0	0	0	2.000
DMC	168	60	0	0	0	0.0	0.0	0.0	0	0	1.000
DMC	225	628	0	0	0	0.0	0.0	0.0	0	0	1.000
DMC	310	216	0	0	0	0.0	0.0	0.0	0	0	1.000
DMC	318	77	0	0	0	0.0	0.0	0.0	0	0	1.000
DMC	356	646	0	0	0	0.0	0.0	0.0	0	0	1.000
DMC	402	936	0	0	0	0.0	0.0	0.0	0	0	1.000
DMC	407	1659	0	0	0	0.0	0.0	0.0	0	0	1.000
DMC	415	126	0	0	0	0.0	0.0	0.0	0	0	1.000
DMC	435	439	0	0	0	0.0	0.0	0.0	0	0	1.000
DMC	436	767	0	0	0	0.0	0.0	0.0	0	0	1.000
DMC	451	596	0	0	0	0.0	0.0	0.0	0	0	1.000
DMC	632	596	0	0	0	0.0	0.0	0.0	0	0	1.000
DMC	640	155	0	0	0	0.0	0.0	0.0	0	0	1.000
DMC	645	17	0	0	0	0.0	0.0	0.0	0	0	1.000
DMC	647	186	0	0	0	0.0	0.0	0.0	0	0	1.000
DMC	722	1747	0	0	0	0.0	0.0	0.0	0	0	1.000
DMC	729	20	0	0	0	0.0	0.0	0.0	0	0	1.000
DMC	754	714	0	0	0	0.0	0.0	0.0	0	0	1.000
DMC	760	1038	0	0	0	0.0	0.0	0.0	0	0	1.000
DMC	779	1968	0	0	0	0.0	0.0	0.0	0	0	1.000
DMC	823	227	0	0	0	0.0	0.0	0.0	0	0	1.000
DMC	840	580	0	0	0	0.0	0.0	0.0	0	0	1.000
DMC	842	824	0	0	0	0.0	0.0	0.0	0	0	1.000
DMC	939	2756	0	0	0	0.0	0.0	0.0	0	0	2.000
DMC	977	15	0	0	0	0.0	0.0	0.0	0	0	1.000
DMC	3041	414	0	0	0	0.0	0.0	0.0	0	0	1.000
DMC	3042	574	0	0	0	0.0	0.0	0.0	0	0	1.000
DMC	3064	1137	0	0	0	0.0	0.0	0.0	0	0	1.000
DMC	3078	225	0	0	0	0.0	0.0	0.0	0	0	1.000
DMC	3721	82	0	0	0	0.0	0.0	0.0	0	0	1.000
DMC	3740	1061	0	0	0	0.0	0.0	0.0	0	0	1.000
DMC	3743	219	0	0	0	0.0	0.0	0.0	0	0	1.000
DMC	3772	1315	0	0	0	0.0	0.0	0.0	0	0	1.000
DMC	3773	2321	0	0	0	0.0	0.0	0.0	0	0	1.000
DMC	3776	85	0	0	0	0.0	0.0	0.0	0	0	1.000
DMC	3779	874	0	0	0	0.0	0.0	0.0	0	0	1.000
DMC	3787	175	0	0	0	0.0	0.0	0.0	0	0	1.000
DMC	3799	265	0	0	0	0.0	0.0	0.0	0	0	1.000
DMC	3825	3226	0	0	0	0.0	0.0	0.0	0	0	2.000
DMC	3829	107	0	0	0	0.0	0.0	0.0	0	0	1.000
DMC	3856	1202	0	0	0	0.0	0.0	0.0	0	0	1.000
DMC	3857	628	0	0	0	0.0	0.0	0.0	0	0	1.000
DMC	3858	448	0	0	0	0.0	0.0	0.0	0	0	1.000
DMC	3860	1876	0	0	0	0.0	0.0	0.0	0	0	1.000
DMC	3861	1501	0	0	0	0.0	0.0	0.0	0	0	1.000
DMC	3862	1031	0	0	0	0.0	0.0	0.0	0	0	1.000
DMC	3863	1545	0	0	0	0.0	0.0	0.0	0	0	1.000
DMC	3864	1398	0	0	0	0.0	0.0	0.0	0	0	1.000