

PINOY STITCH FREE PATTERN

Copyright owned by Artist. Not for resale or distribution.

Cross Stitch Pattern: Bouquet of Flowers
Designed by: Tessier, Provost, Van Geert
Colors: 35
Stitches: 99 x 160
Sizes:*

14 count	7 w x	11 h	Inches
16 count	6 w x	10 h	Inches
18 count	6 w x	9 h	Inches
21 count	5 w x	8 h	Inches

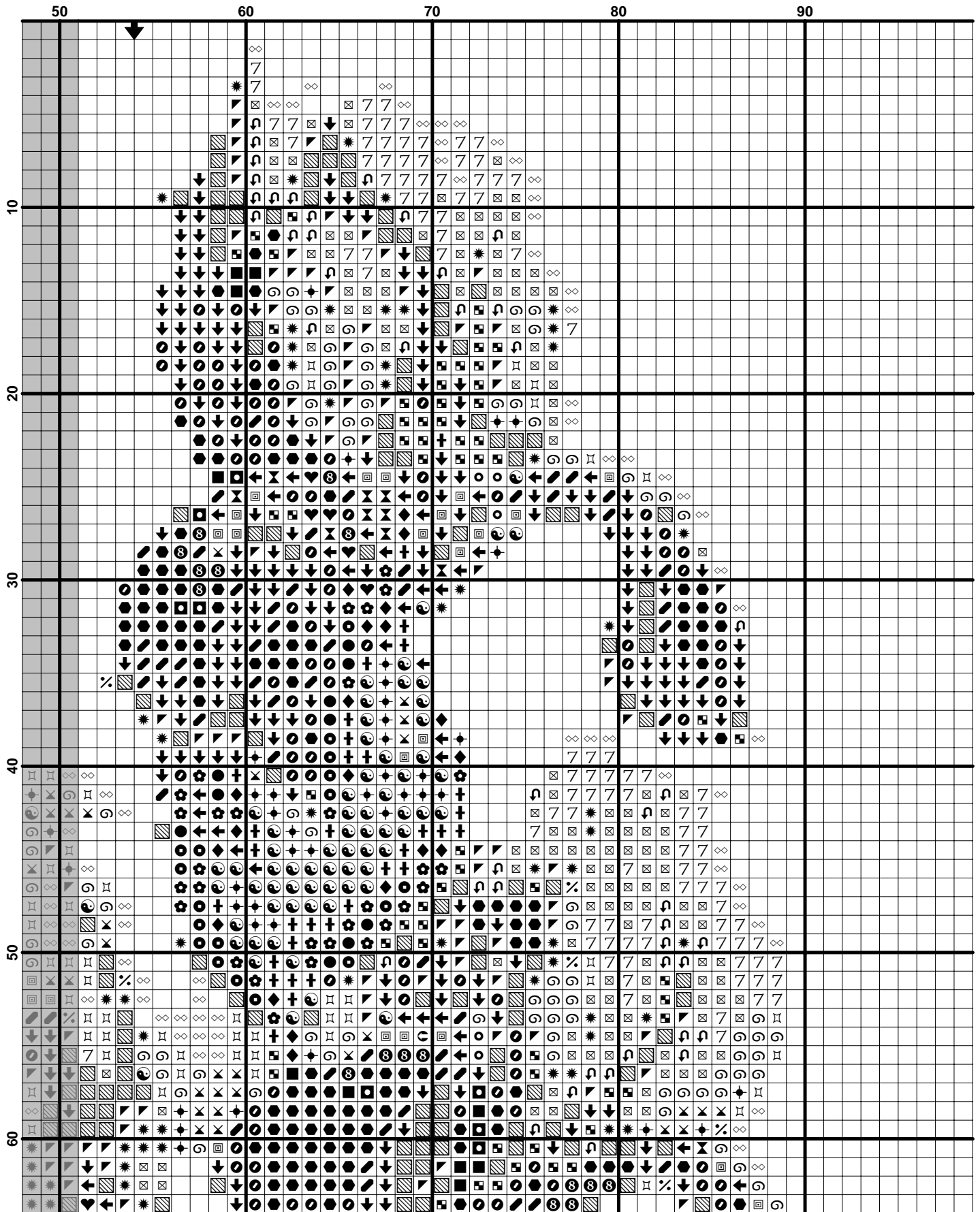
*Pattern sizes do not include margins. Ideally you should add 2" on all sides. Uses Full Stitches Only.

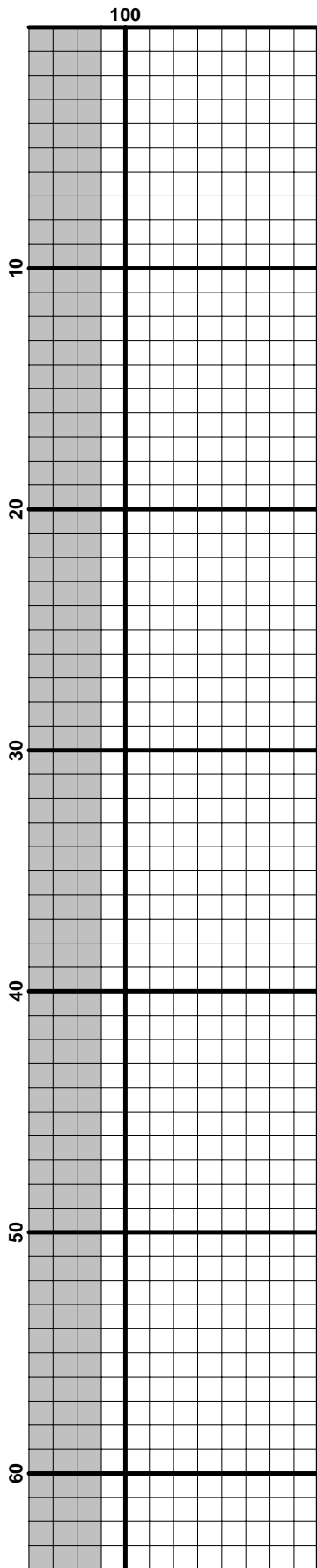


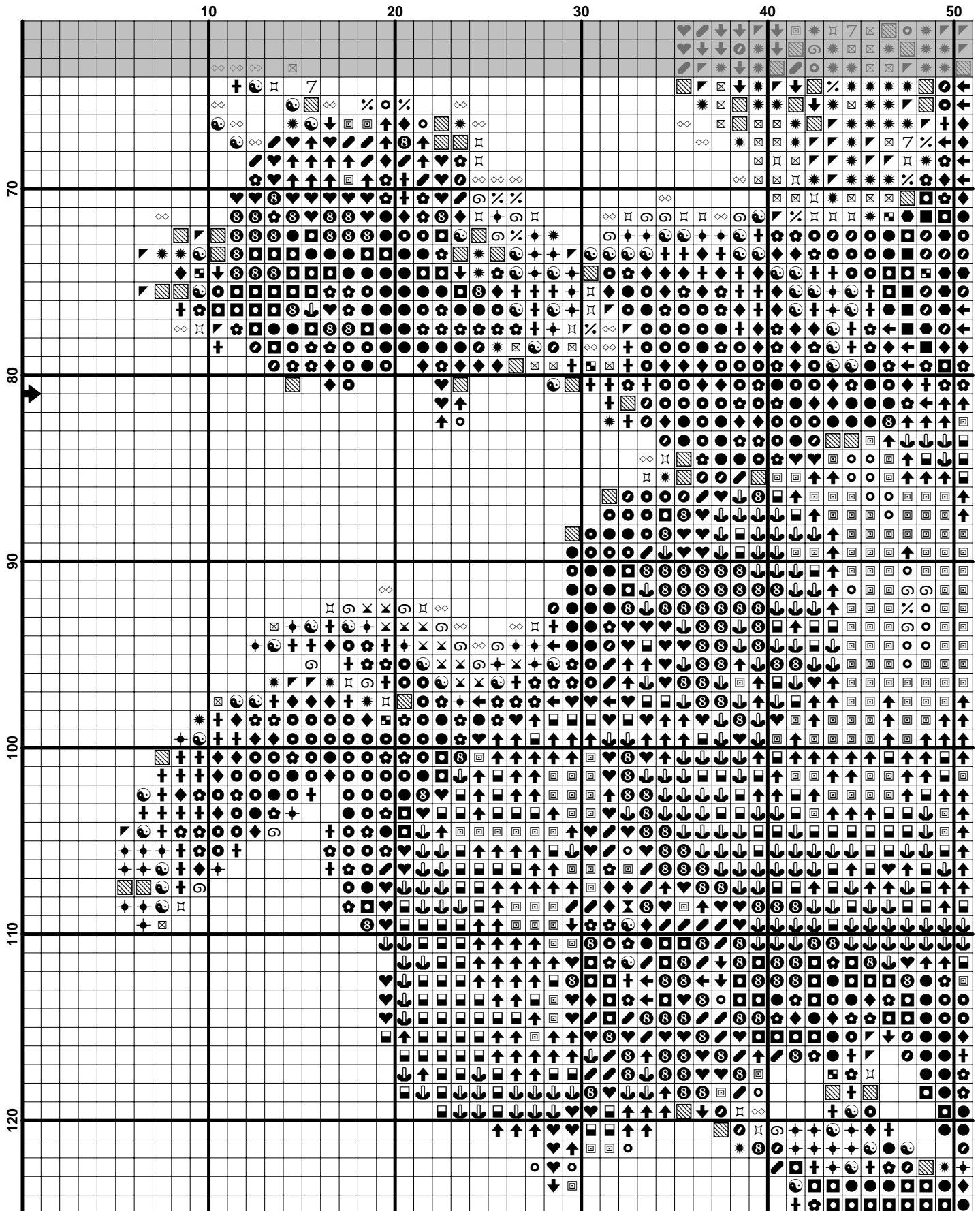
About the Art

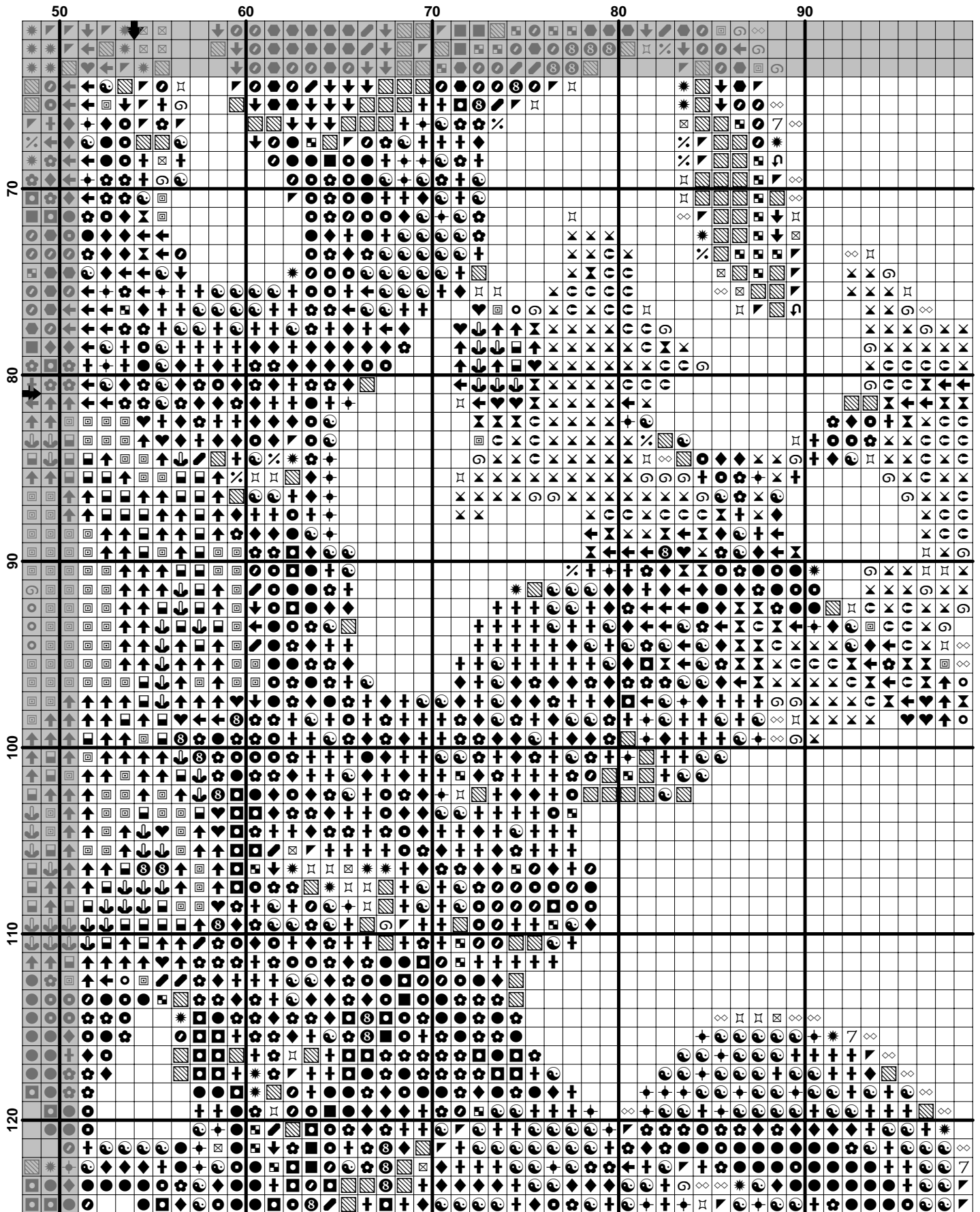
A flower bouquet is a collection of flowers in a creative arrangement. There are different kinds including nosegay, hand-tied, and cascading bouquets. Flower bouquets are often given for special occasions such as birthdays or anniversaries. They are also used extensively in weddings. Traditionally the bride will hold the bouquet, and the Maid of Honor will hold it during the ceremony. After the wedding the bride will toss it over her shoulder, and it is believed that whoever catches the bouquet is the next in line to be married. This practice may be related to the Golden Apple of Discord myth.

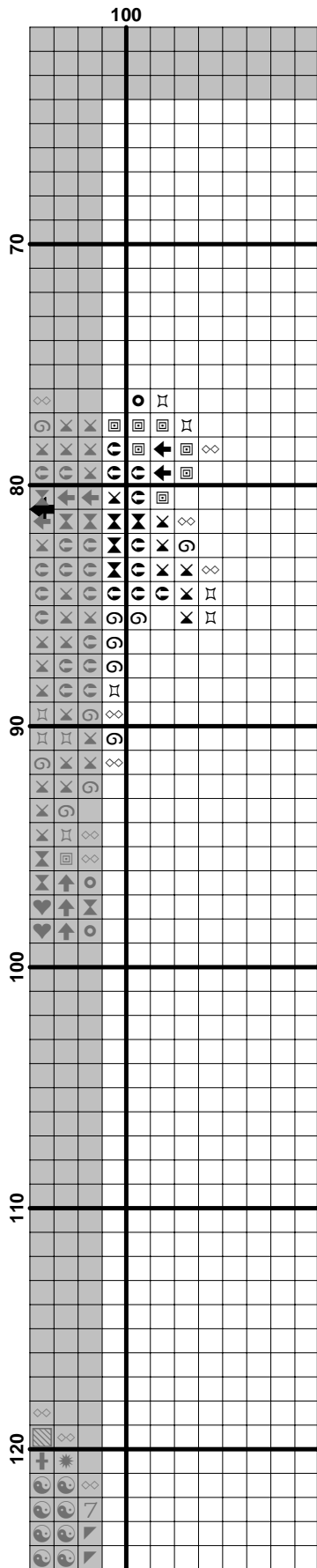
Source: www.wikipedia.com

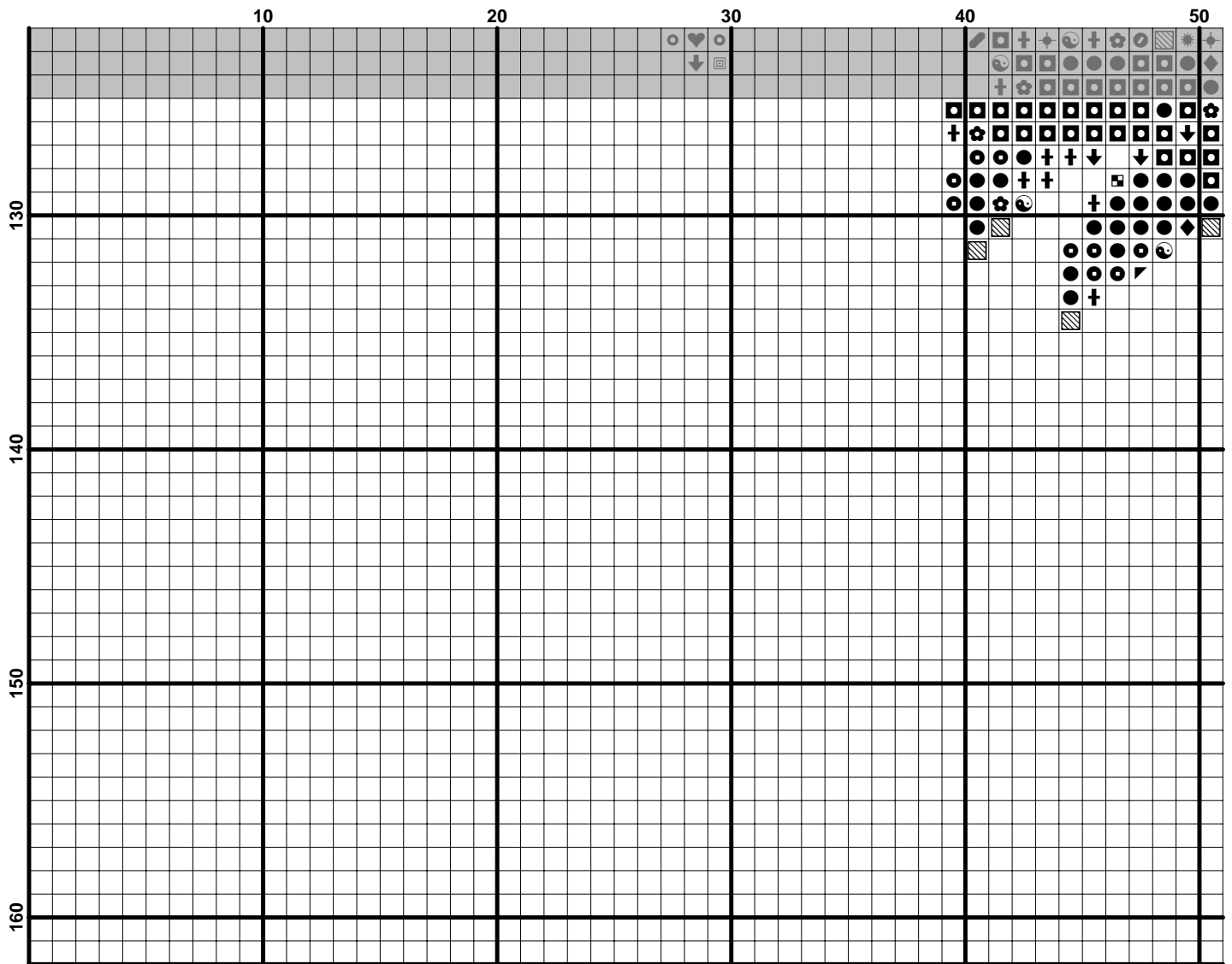


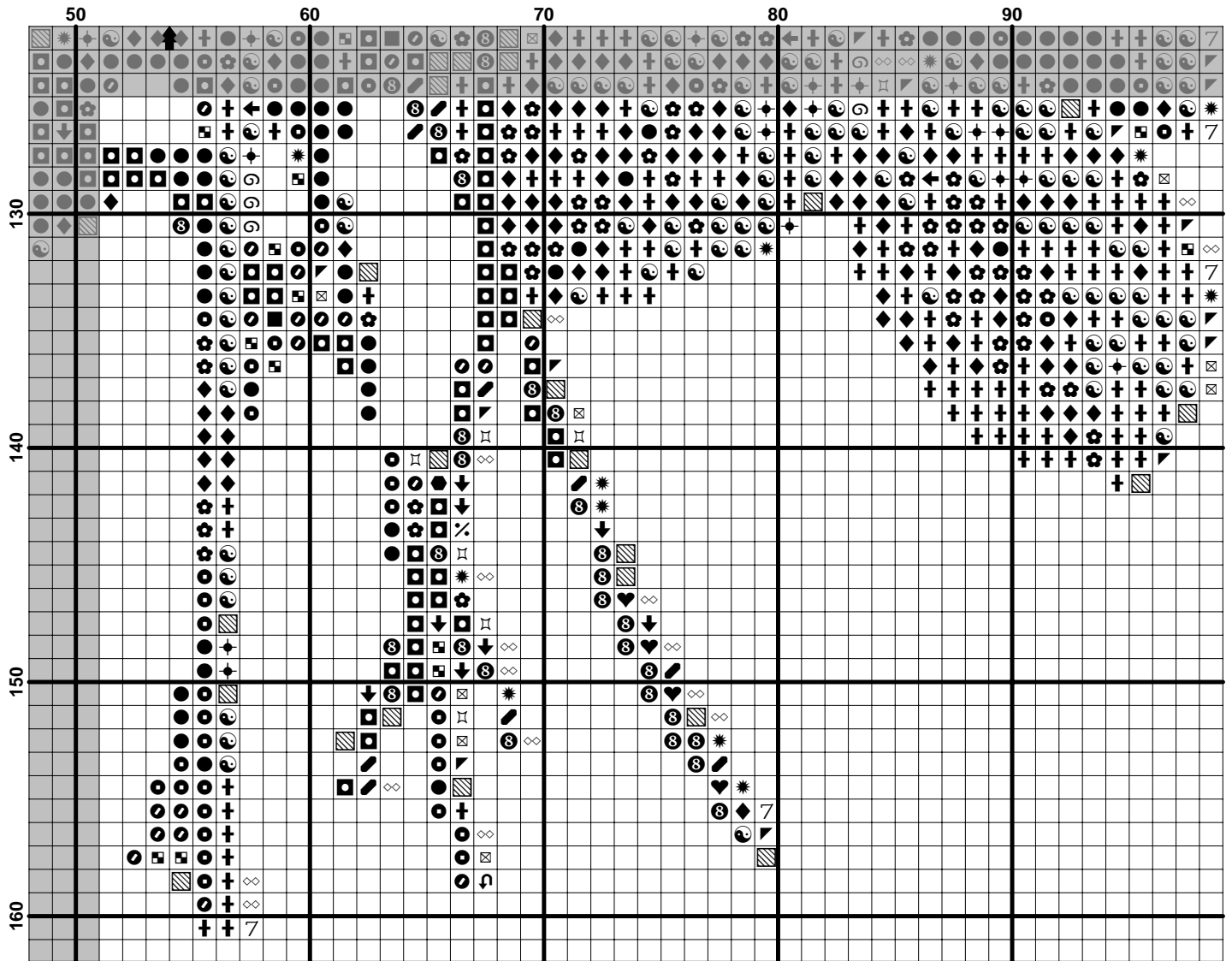


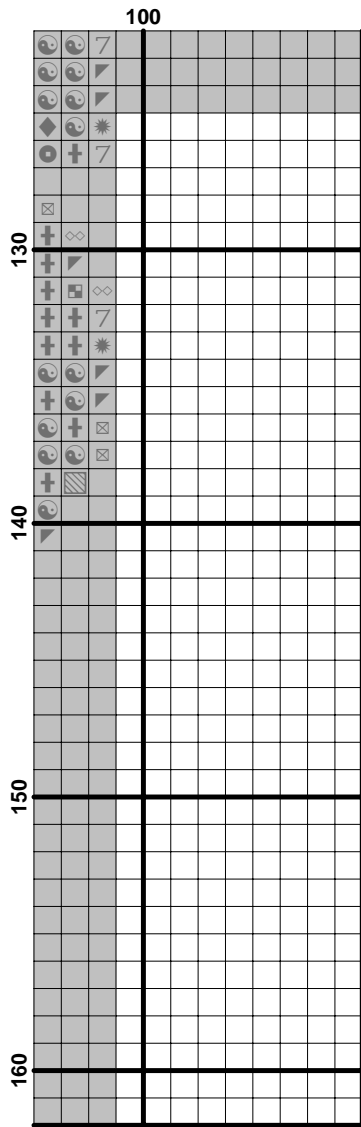











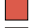
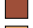
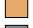








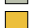
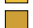
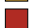












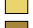









Pattern Name: Bouquet of Flowers
Designed By: Tessier, Provost, Van Geert
Company: <http://www.pinoystitch.org>
Copyright: Owned by Artist. Not for Distribution or Resale.
Fabric: Aida 14, White
 99w X 160h Stitches
Size(s): 14 Count, 7w X 11-3/8h in
 16 Count, 6-1/8w X 10h in
 18 Count, 5-1/2w X 8-7/8h in
 21 Count, 4-5/8w X 7-1/2h in

Floss Used for Full Stitches:

Symbol	Strands	Type	Number	Color
	2	DMC	224	Shell Pink-VY LT
	2	DMC	225	Shell Pink-UL VY LT
	2	DMC	310	Black
	2	DMC	315	Antique Mauve-VY DK
	2	DMC	319	Pistachio Green-VY DK
	2	DMC	350	Coral-MD
	2	DMC	355	Terra Cotta-DK
	2	DMC	402	Mahogany-VY LT
	2	DMC	414	Steel Gray-DK
	2	DMC	415	Pearl Gray
	2	DMC	453	Shell Gray-LT
	2	DMC	469	Avocado Green
	2	DMC	471	Avocado Green-VY LT
	2	DMC	535	Ash Gray-VY LT
	2	DMC	550	Violet-VY DK
	2	DMC	647	Beaver Gray-MD
	2	DMC	648	Beaver Gray-LT
	2	DMC	728	Topaz
	2	DMC	783	Topaz-MD
	2	DMC	817	Coral Red-VY DK
	2	DMC	823	Navy Blue-DK
	2	DMC	890	Pistachio Green-UL DK
	2	DMC	900	Burnt Orange-DK
	2	DMC	902	Garnet-VY DK
	2	DMC	936	Avocado Green-VY DK
	2	DMC	3041	Antique Violet-MD
	2	DMC	3047	Yellow Beige-LT
	2	DMC	3072	Beaver Gray-VY LT
	2	DMC	3346	Hunter Green
	2	DMC	3348	Yellow Green-LT
	2	DMC	3756	Baby Blue-UL VY LT
	2	DMC	3770	Tawny-VY LT
	2	DMC	3822	Straw-LT
	2	DMC	3829	Old Gold-VY DK
	2	DMC	3865	Winter White

Notes:

This pattern is being distributed free of charge. If you have purchased this please get in touch with us at pinoystitch@gmail.com

Usage Summary**Strands Per Skein:** 6**Skein Length:** 313.0 in

Type	Number	Full	Half	Quarter	Petite	Back(in)	Str(in)	Spec(in)	French	Bead	Skein Est.
DMC 224	224	38	0	0	0	0.0	0.0	0.0	0	0	1.000
DMC 225	225	51	0	0	0	0.0	0.0	0.0	0	0	1.000
DMC 310	310	206	0	0	0	0.0	0.0	0.0	0	0	1.000
DMC 315	315	129	0	0	0	0.0	0.0	0.0	0	0	1.000
DMC 319	319	273	0	0	0	0.0	0.0	0.0	0	0	1.000
DMC 350	350	279	0	0	0	0.0	0.0	0.0	0	0	1.000
DMC 355	355	125	0	0	0	0.0	0.0	0.0	0	0	1.000
DMC 402	402	255	0	0	0	0.0	0.0	0.0	0	0	1.000
DMC 414	414	104	0	0	0	0.0	0.0	0.0	0	0	1.000
DMC 415	415	47	0	0	0	0.0	0.0	0.0	0	0	1.000
DMC 453	453	198	0	0	0	0.0	0.0	0.0	0	0	1.000
DMC 469	469	357	0	0	0	0.0	0.0	0.0	0	0	1.000
DMC 471	471	446	0	0	0	0.0	0.0	0.0	0	0	1.000
DMC 535	535	200	0	0	0	0.0	0.0	0.0	0	0	1.000
DMC 550	550	137	0	0	0	0.0	0.0	0.0	0	0	1.000
DMC 647	647	330	0	0	0	0.0	0.0	0.0	0	0	1.000
DMC 648	648	190	0	0	0	0.0	0.0	0.0	0	0	1.000
DMC 728	728	70	0	0	0	0.0	0.0	0.0	0	0	1.000
DMC 783	783	63	0	0	0	0.0	0.0	0.0	0	0	1.000
DMC 817	817	192	0	0	0	0.0	0.0	0.0	0	0	1.000
DMC 823	823	23	0	0	0	0.0	0.0	0.0	0	0	1.000
DMC 890	890	281	0	0	0	0.0	0.0	0.0	0	0	1.000
DMC 900	900	175	0	0	0	0.0	0.0	0.0	0	0	1.000
DMC 902	902	187	0	0	0	0.0	0.0	0.0	0	0	1.000
DMC 936	936	387	0	0	0	0.0	0.0	0.0	0	0	1.000
DMC 3041	3041	257	0	0	0	0.0	0.0	0.0	0	0	1.000
DMC 3047	3047	166	0	0	0	0.0	0.0	0.0	0	0	1.000
DMC 3072	3072	222	0	0	0	0.0	0.0	0.0	0	0	1.000
DMC 3346	3346	502	0	0	0	0.0	0.0	0.0	0	0	1.000
DMC 3348	3348	169	0	0	0	0.0	0.0	0.0	0	0	1.000
DMC 3756	3756	116	0	0	0	0.0	0.0	0.0	0	0	1.000
DMC 3770	3770	200	0	0	0	0.0	0.0	0.0	0	0	1.000
DMC 3822	3822	242	0	0	0	0.0	0.0	0.0	0	0	1.000
DMC 3829	3829	121	0	0	0	0.0	0.0	0.0	0	0	1.000
DMC 3865	3865	232	0	0	0	0.0	0.0	0.0	0	0	1.000